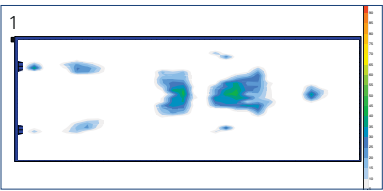


Invacare® Solace® Prevention 1080 Mattress

A zoned top layer relieves pressure in the important susceptible body zones. The convoluted “fortress” cut design offers more surface area for patient support and relief. Two layers of high quality foam include softer head and heel sections. Available in 80" standard length.

Features

- 70 Denier nylon top
- 11 oz. tri-laminate vinyl bottom
- Fluid resistant
- Raised side rail design available
- Compliant with federal fire regulations



1. Test shows subject in supine position demonstrating contact measurement between key pressure points using FSA pressure mapping technology. Subject: Female, 5'2", 105 lb.



Model #	Dimensions	Weight Capacity	Regulation Compliance	Limited Warranty
SPS1080	80" L 36" W 6" H	350 lb.	16 CFR 1632 16 CFR 1633	5 Years (Mattress) 1 Year (Cover)