

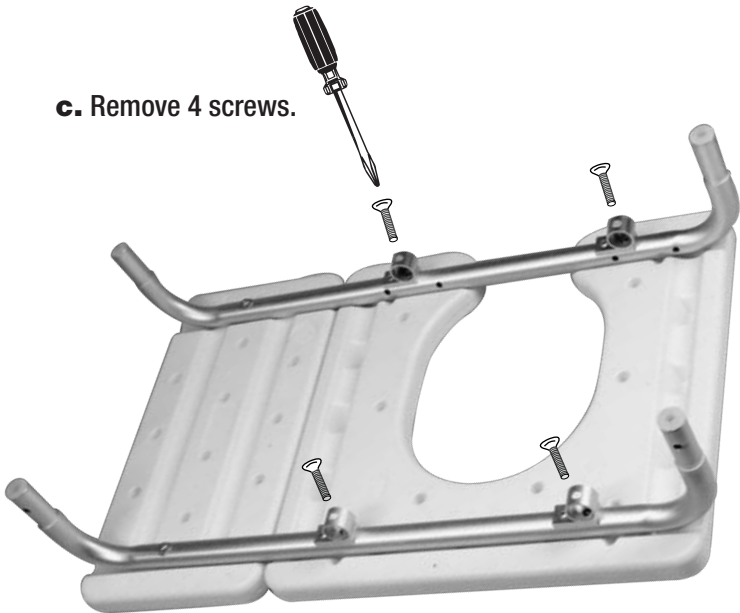
OUTSIDE

TO SWITCH COMMODE SEAT DIRECTION:

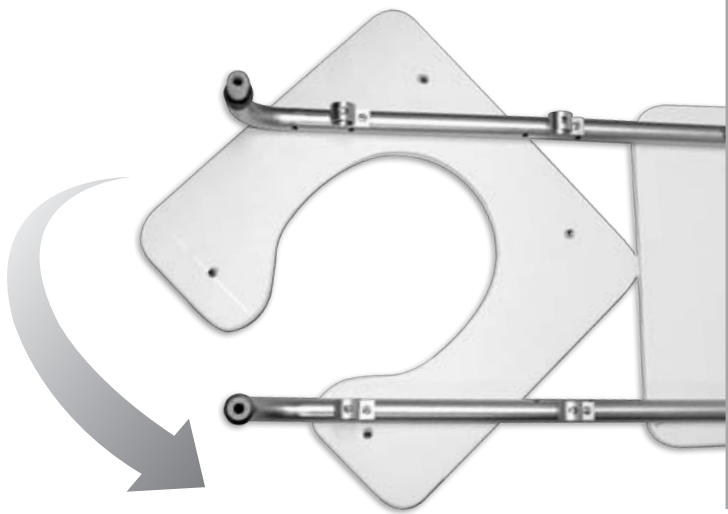
- a. Remove commode bucket holder frame.
- b. Remove seat back (L-Bars).



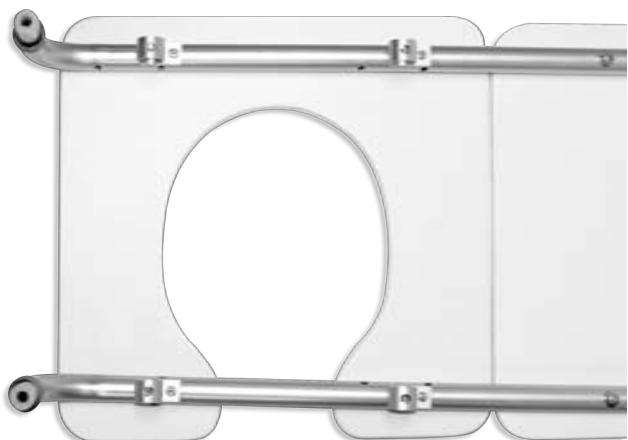
- c. Remove 4 screws.



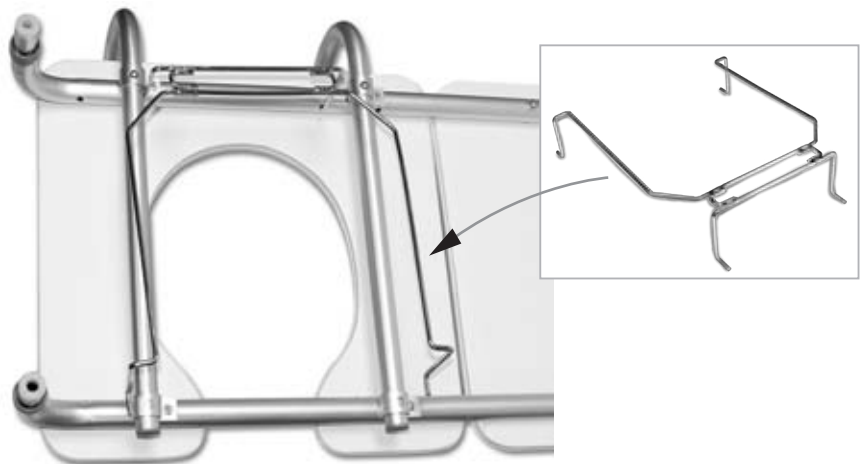
- d. Rotate seat.



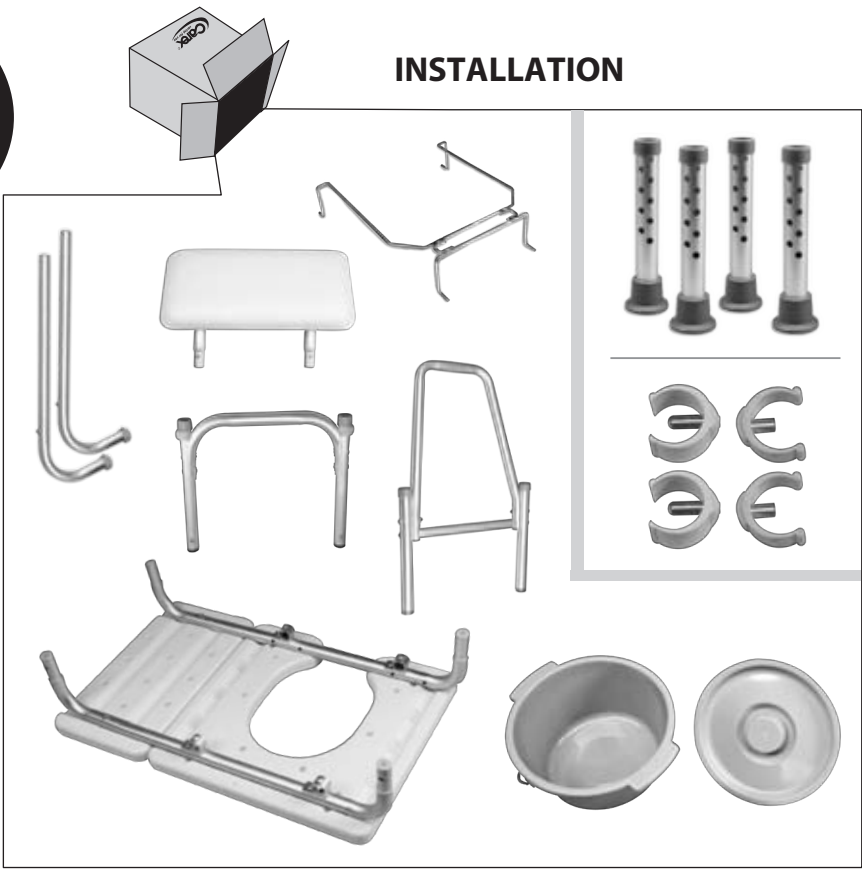
- e. Re-Attach 4 screws.



- f. Replace seat back noting direction.
- g. Replace commode bucket holder frame

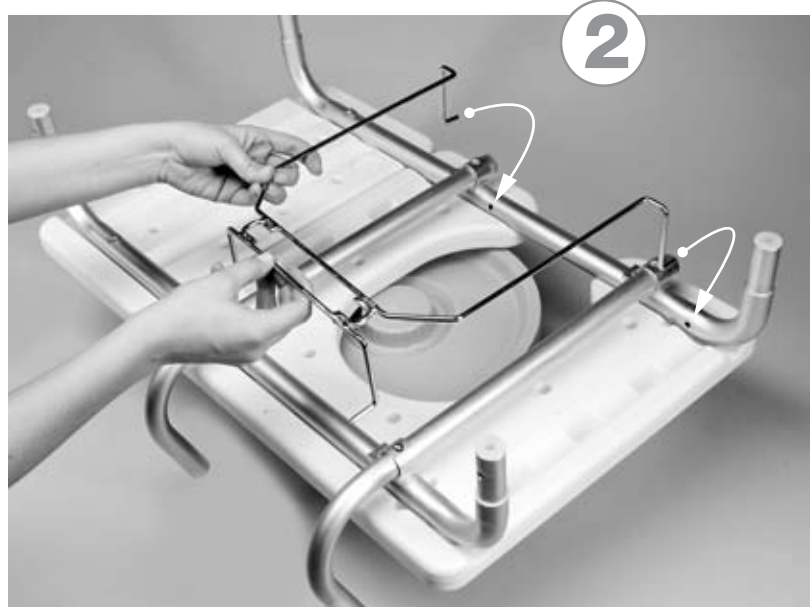
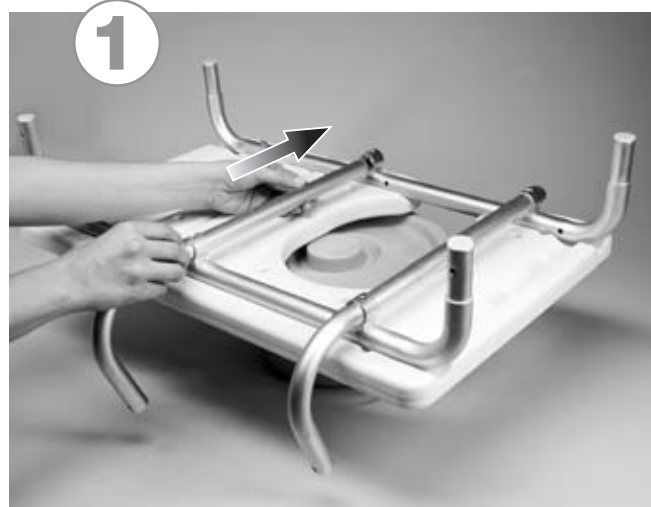


INSTALLATION

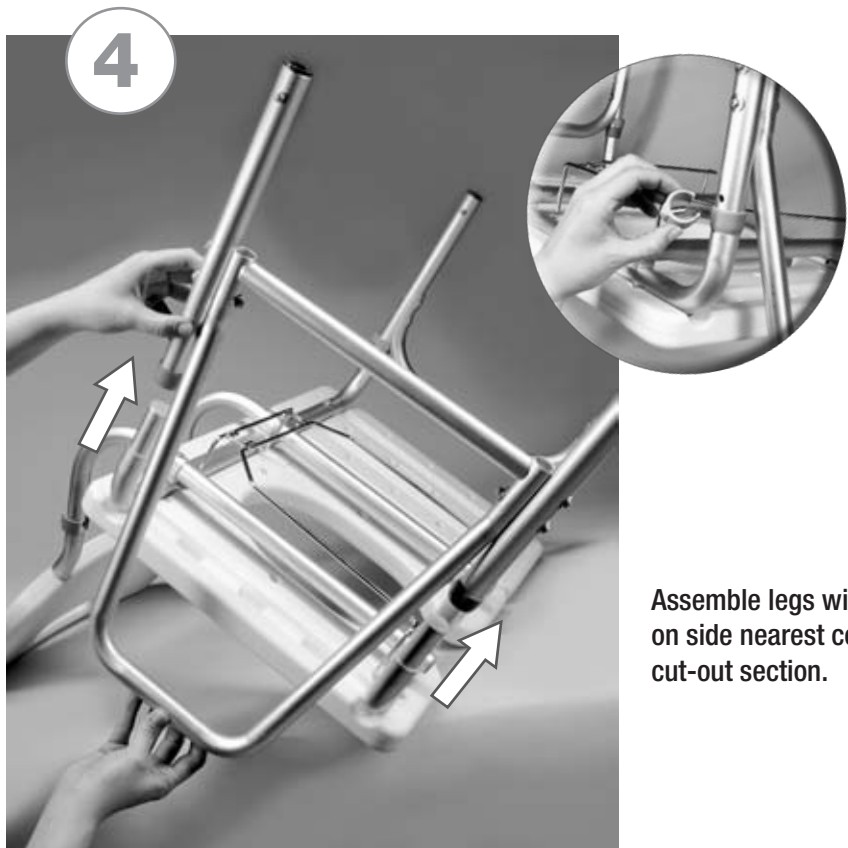


NOTE: BEFORE ASSEMBLY, SEE BACK PAGE TO SWITCH FOR RIGHT OR LEFT HAND USE.

Suggest installing near the bathtub to determine seat back and handle bar left or right placement.



INSIDE



Assemble legs with armrest  
on side nearest commode  
cut-out section.



Assemble legs without armrest on side away from  
commode cut-out section.



Slide leg attachments with tips onto bottom of all  
four legs.  
Make sure pin has clicked into holes and that all  
legs are level.



Slide in commode bucket.

! Clips must be  
secured on all 4 legs.

**Carex Health Brands**  
PO Box 2526 • Sioux Falls, SD 57101-2526  
Phone: 800-328-2935 • Fax: 888-616-4297  
www.carex.com



**Carex Health Brands**

All Rights Reserved  
© 2009 Carex Health Brands  
40-B152-11\_00