

Available Styles	BUCKLE / CLOSURE		REORDER NUMBER	
	Nickel-Plated	Quick-Release	Standard*	Extra Long 70" (178 cm)
White Cotton	●		<b>6524</b>	<b>6524L</b>
Coral Reef	●		<b>6525</b>	<b>6525L</b>
Confetti	●		<b>65251</b>	<b>65251L</b>
Lavender	●		<b>65252</b>	<b>65252L</b>
Fiesta	●		<b>6527</b>	<b>6527L</b>
Navy Blue	●		<b>6528</b>	<b>6528L</b>
Southwest Embroidered	●		<b>6529</b>	<b>6529L</b>
Bouquet	●		<b>6531</b>	<b>6531L</b>
White		●	<b>6524Q</b>	<b>6524QL</b>
Navy		●	<b>6528Q</b>	<b>6528QL</b>
Bouquet		●	<b>6531Q</b>	<b>6531QL</b>
Stars and Stripes - Ribbon	●		<b>6549</b>	<b>6549L</b>

\*Standard length is 54" (137 cm) unless otherwise noted.  
Colors and patterns on belts subject to change without notice.

### Posey Add-On Gait Belt Handles

Upgrade standard Gait Belts with a vertical hand grip for better support when assisting patients. Fits all 2" wide Gait Belts and the ergonomically contoured soft touch, polymer handles provide a firmer handhold. Weight capacity of 300 lbs. (136 kgs.) per handle.

Quantity	Item #
1 pair	<b>6558</b>



### Other Posey Gait Belts

#### Posey Falls Management Gait Belts

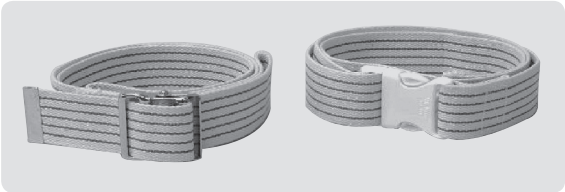
Posey Falls Management Gait Belts are available in Yellow, Red, Purple, Orange and Green to match Posey's Falls Management Kits and other color-coded Fall Risk Indicator Products. The brightly-colored 2" wide cotton gait belts accommodate waists up to 51" (130 cm) and provide caregivers with a secure hold point while assisting patients during supervised walking and transfers. Used correctly, Gait and Transfer Belts reduce the risk of injury to the patient/resident and the caregiver resulting from a loss of balance or an uncontrolled fall. When not in use, the Gait Belt can be worn by the caregiver to ensure immediate availability when needed.



Webbing Color	Buckle Type	Item Number
Green	Metal	<b>6547G</b>
Orange	Metal	<b>6547O</b>
Purple	Metal	<b>6547P</b>
Red	Metal	<b>6547R</b>
Yellow	Metal	<b>6547Y</b>

#### Posey Single-Patient Use Gait Belts

Posey Single-Patient Use Gait Belts provide caregivers with a secure hold point while assisting patients during supervised walking and transfers. Used correctly, Gait and Transfer Belts reduce the risk of injury to the patient/ resident and the caregiver resulting from a loss of balance or an uncontrolled fall.



Buckle Type	Length	Quantity	Item Number
Metal	60"L (152 cm)	Box of 50	<b>6556</b>
Metal	72"L (183 cm)	Box of 50	<b>6556L</b>
Quick-Release	60"L (152 cm)	Box of 50	<b>6556Q</b>
Quick-Release	72"L (183 cm)	Box of 50	<b>6556QL</b>

#### Posey Premium EZ Clean Gait Belts

Heavy-duty laminated webbing wipes clean to help address facility cross-contamination concerns. Spring loaded, self-locking buckle is easy to apply and molded from rugged polyethylene. 2" (5 cm) wide webbing. Available in standard and bariatric lengths and in five colors.

Webbing Color	Fits waist up to	
	58"L (147 cm)	70"L (178 cm)
Pink	<b>6546P</b>	<b>6546PL</b>
Black	<b>6546</b>	<b>6546L</b>
Blue	<b>6546B</b>	<b>6546BL</b>
Orange	<b>6546O</b>	<b>6546OL</b>
Yellow	<b>6546Y</b>	<b>6546YL</b>



## Posey® Gait and Transfer Belts



**Recommended Use:** Patients/Residents requiring ambulation and/or transfer assistance.

*Posey Gait and Transfer Belts provide caregivers with a secure hold point to assist patients/ residents during supervised walking and transfers. Used correctly, Gait and Transfer Belts reduce the risk of injury to the patient / resident and the caregiver resulting from a loss of balance or an uncontrolled fall.*



NOTE: This product is not intended for use as a restraint. Remove after each use. When not in use, the caregiver can wear the belt for immediate access as needed.

**⚠WARNING NEVER** apply a Gait Belt or Transfer Belt if there is any compromise of safety or indication of inappropriateness to the patient or caregiver. Patients using a Gait Belt or Transfer Belt that have the following conditions should always be evaluated: ostomy, colostomy, G-tubes, hernias, severe Cardio Obstructive Pulmonary Disease (COPD), as well as those with post-surgery incisions, or those fitted with monitoring equipment, tubes or lines that might be compromised by the pressure or the rubbing against a Gait Belt or Transfer Belt. Do not use a Gait Belt or Transfer Belt if the risk is outweighed by the benefit.

**⚠CAUTION** Do not over-rely on a Gait or Transfer Belt. These are not a substitute for good body mechanics when assisting patients. Get assistance when needed, and always follow the facility's written procedures for approved assisted walking, lifting and/or transfer procedures.

**⚠WARNING Monitoring: ALWAYS** check for skin integrity, proper circulation and range of motion when the belt is in use. Ensure that the belt is secure and does not compromise the patient's medical condition and does not interfere with tubes, lines or other equipment.

**⚠WARNING Inspection: ALWAYS** inspect before each use: check for broken stitches or parts; torn, cut or frayed material; or buckles that are cracked or broken and do not hold securely. NEVER use soiled or damaged products.

**⚠WARNING NEVER** use a Gait or Transfer Belt as a seat belt or to position a person in a chair or vehicle. Gait and Transfer Belts are not designed for seat positioning or to withstand the force of a crash.



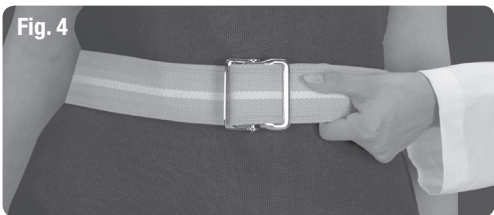
**⚠WARNING Disposal:** Properly dispose of the product per facility's policy for BIOHAZARDOUS materials.

**⚠CAUTION Storage And Handling:** Gait and Transfer Belts are designed for use in normal indoor environments. Store in ambient warehouse temperatures at normal humidity levels. Avoid excess moisture or high humidity that may damage the product.

 Posey Company • 5635 Peck Road, Arcadia, CA 91006-0020 USA  
Phone: 1.800.447.6739 • 1.626.443.3143 • Fax: 1.800.767.3933 • [www.posey.com](http://www.posey.com)

Application Instructions for Metal Buckle:

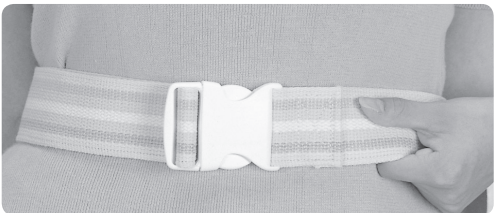
1. With the Posey label facing outside, wrap the belt around the patient's waist, pass the metal tip of the belt through the buckle and over the teeth of the buckle (Fig. 1).
2. Bring the tip of the belt across the front of the buckle and slip it through the other side (Fig. 2). Adjust it so it is snug, but not uncomfortable for the patient. You should be able to slip your open hand (flat) between the belt and the patient.
3. The strap should lay flat across the buckle. Tuck excess under the belt (Fig. 3). **Always** verify proper closure before use.
4. **Always** grasp the transfer belt from underneath (Fig. 4). Assist patient using your facility's approved procedures.



Application Instructions for Quick-Release Buckle:

1. Release the quick-release buckle by pushing inward on the quick-release buttons.
2. Fit the belt to the patient's waist size.
3. Once adjusted, wrap the belt around the patient and snap the buckle shut.
4. Make sure you can slide your open hand (flat) between the belt and the patient.
5. Turn the buckle around to the patient's back (tuck excess strap under belt).
6. **ALWAYS** grasp the transfer belt from underneath. Assist patient using your facility's approved procedures.

**⚠️WARNING** The quick-release buckle should be positioned to the patient's back so that the patient can not release the buckle during transfer. Release of the buckle during transfer may result in injury. **ALWAYS** verify the buckle is not broken or cracked and holds securely before transferring the patient.



Application Instructions for the Posey E-Zee Closure:

1. With the Posey label facing away from the patient, wrap the belt around the patient's waist and pass the end through the first metal ring on the belt.
2. For waists up to 42" (107 cm), pass the tip through the second metal ring also. For waists 43" to 54" (109 cm to 137 cm), use only the first metal ring.
3. After passing the belt through the appropriate metal ring(s), fold it over itself and back in the opposite direction.
4. Secure the hook and loop closure by pressing both sides together firmly.
5. **Always** verify proper closure before use. Adjust the belt so it is snug, but not uncomfortable for the patient. You should be able to slide your open hand (flat) between the belt and the patient.



Washing Instructions for Posey Cotton and/or Polyester Gait and Transfer Belts:

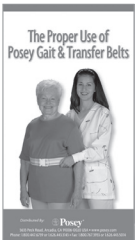
To maintain bright colors in **non-contaminated** Gait and Transfer Belts:



For all **contaminated** Gait and Transfer Belts:



NOTE: Fasten all buckles to minimize damage during wash and dry cycles. Close hook and loop fasteners before washing to prevent lint build-up. Use stiff metal brush to clean "hook" material after washing. Test hook-and-loop adhesion before use, and discard belt if hook and loop does not hold securely. During the washing, process, metal buckles could bend and quick-release buckles could crack or break. Do not put buckles through extractors. Always ensure that all buckles are in good working order and are not cracked or broken before each use. Customers could expect up to 5% shrinkage in cotton materials over the life of the product.



Inservice Video Available!

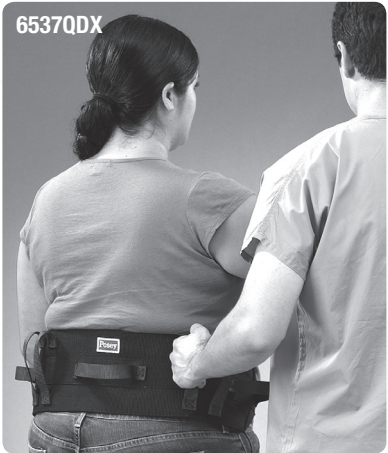
"The Proper Use of Posey Gait and Transfer Belts" is a 15 minute video that demonstrates the proper application of Posey Transfer and Walking Belts. Available in both DVD (REF 8508D) and VHS (REF 8508) formats, the video reviews nine basic rules for successful transfers and three common transfer procedures.

Posey Transfer and Walking Belts

Posey Transfer and Walking Belts offer caregivers added support with multiple easy to grasp hand loops. The belt is made of machine washable black nylon webbing with green nylon hand loops. Belts are available with nickel-plated or quick-release buckle closures.



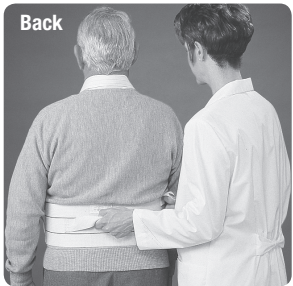
Fits Waist	Handles	Buckle	Rear Band	Item Number
30" to 66" (76 cm to 168 cm)	7	Metal	6" (15 cm) wide	<b>6537DX</b>
30" to 66" (76 cm to 168 cm)	7	Quick-Release	6" (15 cm) wide	<b>6537QDX</b>
28" to 52" (71 cm to 132 cm)	6	Metal	4" (10 cm) wide	<b>6537</b>
28" to 52" (71 cm to 132 cm)	6	Quick-Release	4" (10 cm) wide	<b>6537Q</b>



Posey Ergonomic Walking Belt

This white cotton belt is 5" (13 cm) wide and has three hand loops, one at each side and one horizontal loop in the back. The side handles are reinforced with plastic for a more secure grip. Attaches quickly with plastic quick-release buckles. Adjustable strap in back for improved fit. Machine washable.

Size	Fits Waist	Item Number
Small	26" to 34" (66 cm to 86 cm)	<b>6534S</b>
Medium	33" to 38" (84 cm to 97 cm)	<b>6534M</b>
Large	36" to 45" (91 cm to 114 cm)	<b>6534L</b>
X-Large	44" to 52" (112 cm to 132 cm)	<b>6534XL</b>



Application Instructions:

1. Center the belt around the patient's waist with the quick-release buckles in the center front and the rear adjustment strap at the top of the belt.
2. Adjust the belt to fit so it is snug, but not uncomfortable for the patient, and close it with the hook-and-loop fastener. You should be able to slide your open hand (flat) between the belt and the patient.
3. Secure the quick-release buckles and tighten the straps so that they lie flat.
4. Tighten the cotton strap in the rear of the belt until it fits snugly in the waist area. Make sure the strap and buckle lie flat against the belt.