

# Choose the right hip belt

## 1 BELT TYPE



### Two-Point Hip Belt\*

Simple to use and easy to clean, padded hip belts comfortably support postural alignment.



### Four-Point Hip Belt\*

Extra anchor points prevent belt from moving up the abdomen, ensuring that the pelvis remains stable and aligned.



### Evoflex® Pelvic Stabilizer

Stiffened straps hold belt upright for easy closure and clutter-free use. Close fit provides additional stability and control.

\*Available in non-padded and Sub-ASIS compatible styles. Sub-ASIS pads sold separately. See website or Price List for part numbers.

## 2 BUCKLE



### Push-Button

Smooth, rounded corners prevent snagging. Cover is removable for cleaning or replacement.



### Swivel

Low profile, high strength, equalizes tension



### Side-Release

Lightweight, crush-resistant, prevents accidental release



### Metal Push-Button

Strong, secure, pediatric size



### Rehab Latch™

Operate easily with limited hand function

### OPTIONAL COVERS:



#### Reduced Access Cover

**FS018D-1** 1-1/2", Ø14mm button  
Use with M46 belts

**FS019D-1** 2", Ø14mm button  
Use with L62 belts



#### Security Cover

**FS018C-1** 1-1/2", Ø6mm button  
Use with M46 belts

**FS019C-1** 2", Ø6mm button  
Use with L62 belts

## 3 PULL TYPE



### Center-Pull Hip Belt

For low muscle tone or weakness



### Dual-Pull Hip Belt

Greater adjustability to accommodate clothing and weight changes



### Rear-Pull Hip Belt

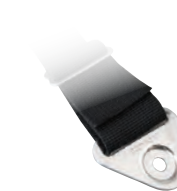
For high muscle tone and pelvic rotation. Position and secure one side of the pelvis before the other.

## 4 OPTIONAL SUB-ASIS PADS



Increase stability and pelvic control just below the ASIS (Anterior Superior Iliac Spine) while reducing pressure. Secure gel-filled Sub-ASIS pads to the inside of Sub-ASIS Compatible Belts and Evoflex® Pelvic Stabilizer. Sold separately in two sizes.

## 5 SELECT END-FITTING



### -B1 Flat-Mount™

Versatile, lowest profile

OR



### -B2 Cinch-Mount™

Time saving, precise, easy adjustment

## 6 OPTIONAL HARDWARE



### HW303 FrameSaver™ Clamp

Frame type: ●  
Fits Ø22mm (7/8") & 25mm (1") tubes,  
Shim fits Ø19mm (3/4") tubing, sold separately



### HW320 Band Clamp

Frame type: ●●●●  
Fits Ø22mm (7/8"), 25mm (1"), 27 x 33mm (1-1/16" x 1-5/16"), 29mm (1-1/8"), 30mm (1-3/16"), 32mm (1-1/4")



### HW310 Frame Clamp

Frame type: ●●  
Fits Ø22mm (7/8") & 25mm (1") tubes



### T-Slot Fastener Kit

Frame type: C  
**HKA6** 6mm (1/4") **HKA10** 10mm (3/8")  
Directly mount belts to power wheelchair slotted seat rails



### HW312 Seat Tube Mounting Bracket Kit

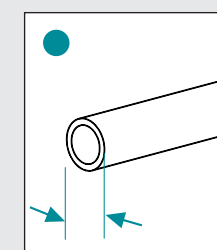
Frame type: ●  
Mounting solution for chairs with sling seat upholstery or a solid seat base



### HKA12 Belt Mount Extension Kit

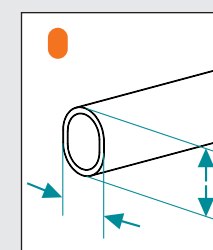
Extend belts and span obstructions when mounting end-fittings

## USER'S GUIDE: FRAME TYPES



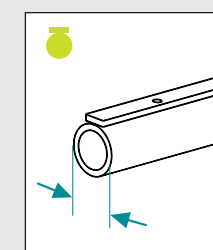
### Round

Ø19, 22, 25, 29, 30, 32mm



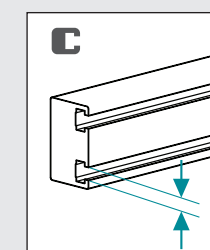
### Oval

Quickie Wheelchairs 27mm x 33mm



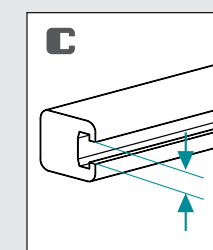
### Tube

with threaded holes for seat upholstery strip



### Permobil Unitrack

6mm T-Slots



### Invacare and Pride

10mm T-Slots