

## SIMPLE DESIGN

**Type** ST8610

**Description:** **IMPACTO ANTI-IMPACT CARPAL TUNNEL GLOVE**

Half finger, cowhide black leather palm, breathable black mesh back. Unique channel over the carpal tunnel to keep pressure off the median nerve. Precision cut to eliminate bunching visco-elastic polymer padding. Hook and loop wrist closure.



**Style Identification:** **Type** ST8610



These gloves comply with the requirements of Directive 89/686/EEC and the standard(s) referenced below.

BS EN420:2003 - Protective gloves. General requirements and test methods.

### **Details of Materials:**

Padding - Visco-elastic polymer

Polyvinyle Carbonate 20%

Dyeoctial 78.5%

Complex 1%

Pigment 0.5% .

Palm and Palm cover: 100% Polyester woven synthetic fabric

Mesh - 100% Polyester 9.88 oz. per square yard

Nylon Lycra - Nylon 80%, Lycra 20%

Hook and Loop: 100% nylon

Tab and Binding: Black Cow Leather 1.5 - 2 oz.

Thread: 100% Polyester

Elastic: 37% Rubber, 63% Polyester

### **Fitting Instructions:**

Insert hand through opening at wrist, fit thumb and fingers into the corresponding thumb and finger holes of the glove. Position the large VEP pad on the palm of the hand. Glove sizes are as detailed below and are not as specified in EN420:1994 table 2. This ensures close fitting to maximise comfort and performance. \* Order one size larger than your normal glove size \*

Glove Size	Fits hand Size	Hand Measurements	
		Circumference (mm)	Length
X-Small	6	152 - 177	160 - 170
Small	7	178 - 202	171 - 181
Medium	8	203 - 228	182 - 191
Large	9	229 - 253	192 - 203
X-Large	10	254 - 278	204 - 214
XX-Large	11	279 - 285	

The length of this Impacto Glove varies from the common length.

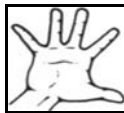
### **Washing Instructions:**

Hand wash with lukewarm water and mild detergent. Do not use bleach or strong detergent. Hang or lay flat, air dry. Do not dry in automatic dryer. Please Note: frequent washing of leather products will make the leather less supple.

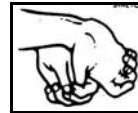
### **Exercises:**



Wrist Curl



Finger Stretch



Thumb Stretch

### **Limitations of Use:**

FOR MINIMAL RISK ONLY. These products are physiological aids. It is important to wear the correct size and comfortably fastened at all times. These gloves are meant for protection only to the palm area of the hand.

### **After Care:**

Follow manufacturers recommendations for washing and cleaning. To ensure optimum protection, regular comparisons are recommended against a new product. The company will not accept liability for product, whose use and care advice has been ignored.



**Manufacturer EEC Contact:** Eric Lehtinen, Regus House, Herald Pegasus Business Park, Castle Donington DE74 2TZ UK  
**Manufacturer:** Impacto Protective Products, P.O. Box 524, Belleville, Ontario, Canada K8N 5B2  
Tel 0800 0280 243, Fax 01332 638 204, Email: [impacto@impacto.ca](mailto:impacto@impacto.ca)