

# R82 Gazelle - E0641

## Order Form



Account #: \_\_\_\_\_

Purchase Order No.: \_\_\_\_\_

Date: \_\_\_\_\_

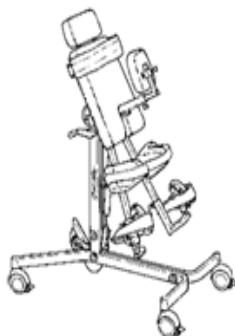
Contact: \_\_\_\_\_

Mark For: \_\_\_\_\_

Bill To:	Ship To:
Address:	Address:
City/State/Zip:	
Phone:	City/State/Zip:
Email	Phone:

### Gazelle Standard Features:

- Prone, upright & supine in one unit
- Multi adjustable foot and knee (reversible) support
- Foldable bracket for back support
- Removable back support
- Trunk safety belt
- Locking castors
- Manual leg abduction
- Gas spring assisted tilt from vertical to horizontal
- Adjustable trunk or chest support



### Gazelle Standard Unit

- ☐ Gazelle PS, Yellow
- ☐ Gazelle PS, Green
- ☐ Gazelle PS, Blue

### Size

- 1
- 2
- 3

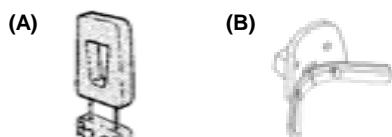
### Part No.

- 88010-1
- 88010-2
- 88010-3

### Head Support

### Size

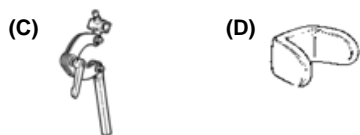
### Part No.



- ☐ Head Support with Facial Aperture (A)
- ☐ Head Support with Facial Aperture (A)
- ☐ Head Support with Facial Aperture (A)
- ☐ Anatomic Head Support (5½" x 5½" x 9½") (B)

- 1
- 2
- 3

- 88117-1
- 88117-2
- 88117-3

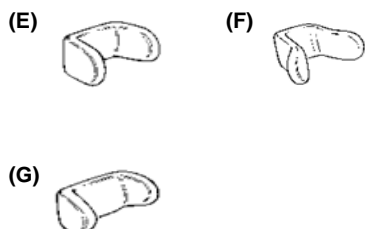


- ☐ Decutex Cover, Black (Required)
- ☐ Anatomic Head Support (6" x 5½" x 10") (B)
- ☐ Decutex Cover, Black (Required)
- ☐ Anatomic Head Support (6½" x 5½" x 12½") (B)
- ☐ Decutex Cover, Black (Required)

- Small
- Small
- Medium
- Medium
- Large
- Large

- 5099001
- 9923-83
- 5099002
- 9945-83
- 5099003
- 9967-83

### Required, must select one:



- ☐ Turtle Bar System, Short (C)\*
- ☐ Turtle Bar System, Long (C)\*
- ☐ Universal Headrest Mount (for Non-R82 Products)
- ☐ Head Support No. 1, Black PU (D)
- ☐ Head Support No. 2, Black PU (E)
- ☐ Head Support No. 3, Black PU (F)
- ☐ Head Support No. 4, Black PU (G)

- 5.1"
- 9.8"

- 98619-25
- 98619-26
- 87590
- 6171550
- 6172550
- 6173550
- 6174550

**Head Support Cont.**

**Turtle Bar size selection required with all Headrests (XX = Turtle Bar size)**

- ☐ 92 = Short Turtle Bar      ☐ 93 = Long Turtle Bar

### Non-Dynamic Adjustable Head Support

- ☐ Adj. Width Headrest, Large Laterals, Black Cover **(H)**
- ☐ Adj. Width Headrest, Large Laterals, w/ Speakers **Required, must select one:**

☐ Turtle Bar System, Short **(C)\*** 5.1"

☐ Turtle Bar System, Long **(C)\*** 9.8"

### Dynamic Adjustable Head Support

- ☐ Adj. Width Headrest, Large Laterals, Black Cover **(H)**  
☐ Adj. Width Headrest, Large Laterals, w/ Speakers

**Required, must select one:**

- |   |      |
|---|------|
| <input type="checkbox"/> Turtle Bar System, Short <b>(C)</b>                    | 5.1" |
| <input type="checkbox"/> Turtle Bar System, Long <b>(C)</b>                     | 9.8" |
| <input type="checkbox"/> Universal Headrest Mount <b>(for Non-R82 Products)</b> |      |
| <input type="checkbox"/> Headband System ***                                    |      |
| <input type="checkbox"/> Extra Headband Strap ***                               |      |

\*\*\* Only available with Anatomic Head Support. Not to be used while unit is in Transit



99737XX-85
99717XX-85

X98619-25
X98619-26

99736XX-85
99716XX-85

X98619-25
X98619-26
87590
99500
99400-5

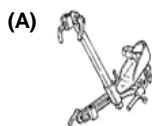
## Foot & Leg Positioning

- |  |          |
|--|----------|
| <input type="checkbox"/> Lower Leg Angle Adjustment Bracket <b>(A)</b> | 1        |
| <input type="checkbox"/> Lower Leg Angle Adjustment Bracket <b>(A)</b> | 2        |
| <input type="checkbox"/> Lower Leg Angle Adjustment Bracket <b>(A)</b> | 3        |
| <input type="checkbox"/> Straps for Footrest w/PVC-Lock                | One Size |
| <input type="checkbox"/> Straps for Footrest w/Velcro                  | One Size |

1  
2  
3  
One Size  
One Size

Part No.

88165-1
88165-2
88165-3
85096
85102



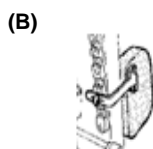
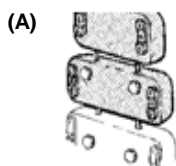
## Trunk Positioning

- |   |       |
|---|-------|
| <input type="checkbox"/> Trunk Support Extension <b>(A)</b>               | 1     |
| <input type="checkbox"/> Trunk Support Extension <b>(A)</b>               | 2     |
| <input type="checkbox"/> Trunk Support Extension <b>(A)</b>               | 3     |
| <input type="checkbox"/> Lateral Supports <b>(B)</b>                      | Small |
| <input type="checkbox"/> Lateral Supports <b>(B)</b>                      | Large |
| <input type="checkbox"/> Lateral Supports, Exterior (Extends Width by 4") | Small |
| <input type="checkbox"/> Lateral Supports, Exterior (Extends Width by 4") | Large |
| <input type="checkbox"/> Lateral Supports, Interior (Extends Width by 4") | Small |
| <input type="checkbox"/> Lateral Supports, Interior (Extends Width by 4") | Large |
| <input type="checkbox"/> Straps for Lateral Supports                      | 1     |
| <input type="checkbox"/> Straps for Lateral Supports                      | 2     |
| <input type="checkbox"/> Straps for Lateral Supports                      | 3     |

1
2
3
Small
Large
Small
Large
Small
Large
1
2
3

Part No.

88106-1
88106-2
88106-3
88055-1
88055-2
88065-1
88065-2
88075-1
88075-2
88250-1
88250-2
88250-3



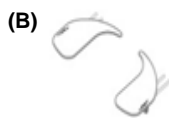
## Accessories

- |  |          |
|--|----------|
| <input type="checkbox"/> Tray w/Bowl & Top Plate, Plastic, Rods <b>(A)</b> | 1, 2     |
| <input type="checkbox"/> Tray w/Bowl & Top Plate, Plastic, Rods <b>(A)</b> | 2, 3     |
| <input type="checkbox"/> Armrests - Mount on Tray <b>(B)</b>               | One Size |
| <input type="checkbox"/> Toybar for Plastic Tray <b>(C)</b>                | One Size |

1, 2  
2, 3  
One Size  
One Size

Part No.

88108-0
88108-1
861131
861135

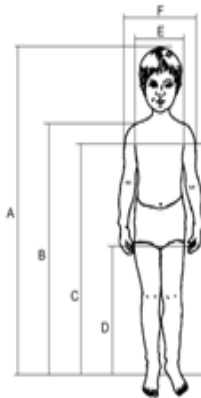


**For shipping rates, please call 1-844-876-6245**

PO Box 1739 Matthews, NC 28106 • 1-844-876-6245 • Fax: 704-882-0751

### Configuration

- ☐ Gazelle
- ☐ Head support
- ☐ Trunk support
- ☐ Hip/side support
- ☐ Tray



**A** (Total Height) \_\_\_\_\_  
**B** (Shoulder Height) \_\_\_\_\_  
**C** (Chest Height) \_\_\_\_\_  
**D** (Buttock Height) \_\_\_\_\_  
**E** (Chest Width) \_\_\_\_\_  
**F** (Shoulder Width) \_\_\_\_\_  
 Age \_\_\_\_\_  
 Weight \_\_\_\_\_

### Measurements

	<b>Size 1</b>	<b>Size 2</b>	<b>Size 3</b>
	<b>Inches</b>	<b>Inches</b>	<b>Inches</b>
<b>Width, Total</b>	29"	23"	26"
<b>Length, Total</b>	30"	35"	39"
<b>Length, Foot-axil</b>	18 - 37"	24 - 41"	28 - 49"
<b>Height, Horizontal</b>	30"	31½"	35"
<b>Height, Folded</b>	11"	12"	12"
<b>Length, Folded</b>	37"	44½"	51"
<b>Height of Buttock</b>	14½"	18"	22"
<b>Angle, Board</b>	90° to -15°	90° to -15°	90° to -15°
<b>Weight</b>	44 lbs.	48 lbs.	53 lbs.
<b>Max. Load/User Weight</b>	88 lbs.	132 lbs.	176 lbs.

### **NOTES**