



Etac Swift Mobil-2

Shower commode chairs

 **etac**[®]

Accessories – for all models



Soft comfort seat, 4 cm rear opening

80209519

Ergonomically shaped with substantial softness providing comfortable relief and support. Designed with a recess at the front. Material: Polyurethane



Soft comfort seat, 2 cm rear opening

80209518

Designed with substantial softness and round shapes for maximum comfort. Designed with a recess at the front. Material: Polyurethane



Soft comfort seat, 4 cm

Small opening 15 cm (6"): 80209507

Large opening 18 cm (7"): 80209506

Ergonomically shaped soft comfort seats with recesses at the front. Height is 4 cm at the lowest point. Material: Polyurethane.



Soft comfort seat, 2 cm

Opening 18 cm: 80209306

Shaped, soft comfort seat with recess at the front. Height is 2 cm at the lowest point. Material: Polyurethane.



Seat cover

80209434

A comfortable, closed seat when you want to cover the hygiene opening. Can be used in the shower. Height 2 cm. Material: Polyurethane.



Soft cushion with standard opening

80209065

Foam cushion with a cover made of a water-repellent fabric. Height 2 cm. Material: Polyether/coated plastic.



Soft cushion with oval opening

80209067

Foam cushion with a cover made of a water-repellent fabric. Height 4 cm. Material: Polyether/coated plastic.



ROHO® Protect cushion

80209245

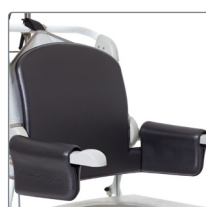
Single chamber inflatable cushion with excellent pressure relieving features. Intended for users who are extra sensitive to pressure. Recess width: 21 cm. Material: Neoprene



Headrest

80209521

Multi-adjustable headrest with shaped pillow. Adjustable in height, depth, sideways and in angle. Complete with bracket. Material: Pillow: Polyurethane
Brace: Stainless steel



Comfort cover

80209455

Soft back with integrated armrest cushions. The comfort padding provides a soft support while the gripping surface on the armrest is kept free. Material: Polyethylene.



Side support

80209509

Offers a soft side support and facilitates positioning in the chair. Adjustable in width. Material: Polyester fabric, Velcro, Polyethylene.



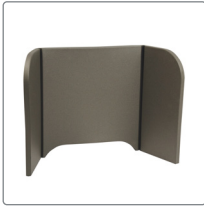
XL-back

80209454

For larger users, offering more room for back and shoulders. Increases the width between the armrests by 6 cm to a total width of 48/54/60. (XL-back does not fit Swift Mobil Tilt-2) Material: Polyester, Powder coated steel, stainless steel. polypropylene



Accessories – for all models



Soft back pad

80209448

Provides the user with warmth and softness. Used inside the armrests, which makes it possible to fold up the armrests and create accessibility for side transfer. Material: Polyethylene.



Armrest pad

80209508

Used to create softness around the armrests. Provides a warm, soft surface to support the arms while keeping the gripping surface free, making it safe to stand up. Sold in pairs. Material: Polyethylene.



Armrest Hemiplegia

80209035

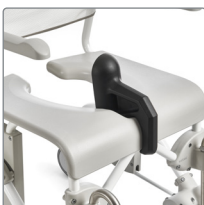
Provides support for the forearm with its contoured shape. Equipped with a heat-reflecting material on the outside. Fits the left and right armrests. Material: Polyethylene



Armrest lock

80209445

A locking pin to be used when you want to lock the armrest in the folded-down or folded-up position. Material: Stainless steel.



Splash guard

80209430

A soft protection against urine splashes at the front. Attaches to the front recess of the seat and can easily be removed. Material: Polyurethane



Cross bar

60.5 cm 80303034

66.5 cm 80209452

A safe support to hold on to or it can be used as a strain support. Attaches to the armrests. Material: Aluminium, polyethylene.



Hip/chestbelt upholstered

80209524

2-part belt for positioning that can be used either as hip- or chest belt. Adjustable with 3 buckles with up to 65-130 cm length. The material is comfortable and quick-drying and provides firm support when positioning.



Hip belt

80209440

Easy to adjust with a plastic buckle. Attaches around the back tubes in the rear with velcro straps. Material: Polyester



Chest belt

80209442

Easy to adjust and attaches around the straps of the back support upholstery. Use with a hip belt is recommended. Material: Polyester



Pan with lid

Pan with lid and handle: 80209255

Unique interior shape that breaks the stream and prevents splashes. The lid has a handle that locks onto the pan and ensures that the content does not spill.

Material: Polypropylene



Pan

Pan without lid 80209254

Lid with handle 80209256

Unique interior shape that breaks the stream and prevents splashes.

Material: Polypropylene



Pan holder

80209257

Suitable for both the Etac pan and traditional hospital pans. Used together with the attachment holders, which are ordered separately.

Material: Polypropylene



Attachment holder

80209435

To be mounted firmly under the seat enabling the use of pan holders. Fitted with a screwdriver. Complete set.

Material: Polyamide



Low mounting of pan/bucket

80209259

Used when you want the pan/bucket placed lower under the seat. Mounted with the pan or the bucket holders. Lowers the bed pan/bucket holders by 6 cm.

Material: Polypropylene.

Accessories – for all models



Bucket holder

80209258

Used as a holder for pans/buckets or bed pans with higher edges. Used together with the attachment holders, which are ordered separately.

Material Polypropylene.



Bucket with handle and lid

80209265

Traditional bucket that is used with a bucket holder.

Material: Polypropylene



Anti-tip Swift Mobil Tilt-2

Anti-tip for Swift Mobil Tilt-2: 80209459

Provides protection against the chair tipping backwards. Increases safety when the centre of gravity falls far to the back.

Material: Polypropylene and Aluminium



Anti-tip Swift Mobil-2

Anti-tip Including attachment: 80209439

Anti-tip excluding attachment: 80209438

Provides protection against the chair tipping backwards.

Material: Polypropylene and Aluminium



Tilter

80209449

Facilitates transfer over e.g. thresholds or ramps. Sold complete with bracket.

Material: Polypropylene and Aluminium



Short footrests

80209520

A short footrest that swings sideways. Can be adjusted 12.5 cm and provides a footrest length of 24 - 36.5 cm. The foot plate has a rounded shape. Sold as a pair.

Material: stainless steel and polypropylene



Leg support

80209446

Adjustable for those who need a more open foot angle and is included with the heelstraps. Sold as a pair.

Material: Stainless steel and polypropylene.



Leg and calf support

80209437

Leg rest with an adjustable angle that can be used for both left and right legs. Comes with 4 fixed-angle positions. Sold per piece.

Material: Stainless steel and ABS-plastic.



Footrest for leg and calf support

80209443

Kit with separate foot plate to be mounted together with leg and calf support.

Material: ABS plastic



Amputee legrest

80209510

Adjustable in height, length and angle. Can be used on both left and right sides. If the user is an amputee we recommend using anti-tippers.

Material: Stainless steel and polyurethane



Heel straps

80209522

Prevents the feet from sliding backwards.

Adjustable in length. Sold as a pair.

Material: Polypropylene and Polyester



Rear wheel kit 24"

80209436

24" rear wheels with solid tyres and built-in tipping guards. Easy to mount. Includes attachment and brake.

Material: Polyamide, stainless steel, polyurethane aluminium