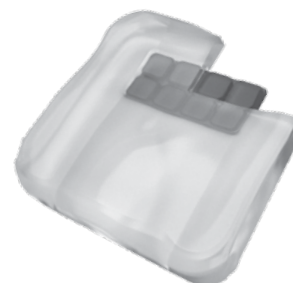




Note: cover required for use.



A brief look into the inside of the AirLITE cushion shows the AIR FLOATATION air insert built into the cushion.

## ROHO® AirLITE® Cushion

The AirLITE is a maintenance-free cushion. The soft, comfortable foam base with the built-in, nonadjustable AIR FLOATATION air insert allows the cushion to conform to your body while also preventing you from bottoming out in your wheelchair. This design also lets you feel more secure in your wheelchair, while the leg troughs help you maintain the right position and posture.

A soft, comfortable foam base supports the non-adjustable ROHO AIR FLOATATION™ insert – allowing the cushion to conform to your body while also preventing you from bottoming out in your wheelchair.



Maintenance-free



Positioning



Comfort



Stability



Lightweight

### Dimensions

Width: 13 in. to 20 in. /  
33 cm to 51 cm

Depth: 13 in. to 18 in. /  
33 cm to 45.5 cm

Height: Approx. 2 in. to 3.75 in. /  
5 cm to 9.5 cm

Weight: 2.25 lbs. / 1 kg

### Weight limit

300 lbs. / 136 kg  
The cushion must also be  
properly sized.

### Limited warranty

24 months

### Our evidence shows the AirLITE cushion is ideal for people who:

- Are looking for a maintenance-free cushion
- Have normal sensation
- Desire additional comfort
- Require increased sitting stability
- Require lower extremity alignment