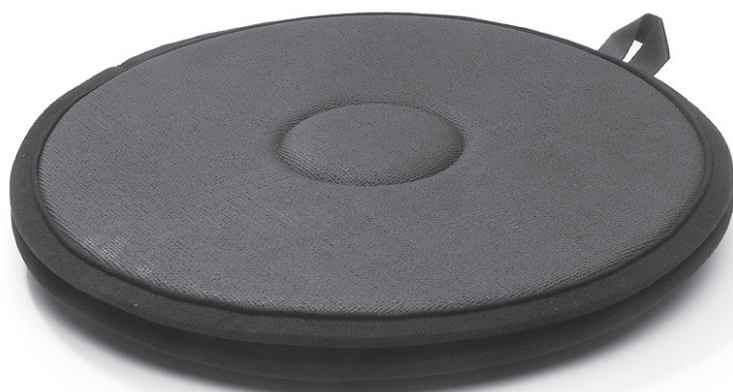


# Pediturn Soft and Hard

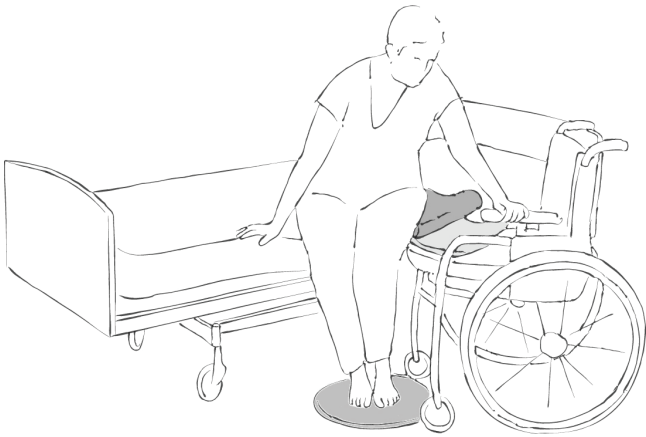
Instruction for Use

**immedia**<sup>®</sup>  
a part of Etac



# Illustrations

Illustration 1



# Contents

| <b>Heading .....</b>                                   | <b>Page</b> |
|--|-------------|
| General/Symbols/Intended use/Intended enviroment ..... | 4           |
| Practical handling.....                                | 5           |
| Notice/Materials/Cleaning .....                        | 6           |
| Articles/Combinations.....                             | 7           |
| Service Information.....                               | 8           |

## General

Thank you for choosing an Etac product.

To avoid accidents and injury when moving and handling the products, read the manual carefully.

The person described as "the user" in this user manual is the person who is lying or sitting on the product. The assistant or assistants are the people who manoeuvre the product.



**This symbol appears alongside the text in the manual. It draws the reader's attention to points at which there may be a risk to the health and safety of the user or assistant.**

The products comply with the standards applicable for Class 1 products in the European Council Directive MDD 93/42/EEC on medical devices.

**Lot no/Batch no:**

|                 |   |   |   |   |                |   |   |   |   |
|-----------------|---|---|---|---|----------------|---|---|---|---|
| x               | x | x | x | x | x              | x | x | x | x |
| Production year |   |   |   |   | Running number |   |   |   |   |

At Etac we strive to improve our products all the time and therefore we reserve the right to make changes to products without prior warning. All measurements given on illustrations and similar material are for guidance only and Etac cannot be held liable for errors and defects.

The information given in this manual, including recommendations, combinations and sizing, does not apply to special orders and modifications. If the customer makes adjustments, repairs or combinations not predetermined by Etac, the Etac CE certification and Etac warranty will be voided. If in doubt, please contact Etac.

**Warranty:** Two-year warranty on material and manufacturing defects, provided that the product is used correctly.

For further information on the Etac transfer range, see [www.etac.com](http://www.etac.com).

The product can be scrapped in accordance with national regulations.

## Symbols



Washing



Handwash



Wipe off



Tumbledry



Keep out of the sun



Iron



Do not dryclean



Do not bleach



Risk of sliding down



pH-level



Never leave on the floor



Warning



Read the User Manual



Batch no./Lot no.



User mass limit = maximum rated load



The product can be scrapped in accordance with national regulations



Manufacturer



Class 1 - European Council Directive MDD 93/42/EEC on medical devices

## Intended use

Pediturn is a slim, lightweight turnplate for floor use in connection with manual handling in the seated position,

where the user must rotate but is not capable of moving his/her legs without assistance.

## Intended environment

Acute care, Long-term care, Home care

## Practical handling

---

### Positioning

---

Place Pediturn on the floor. Position the users feet on the middle of Pediturn so that the users legs are perpendicular to the device.

---

### Use

---

When manually handling a user in the seated position, the users legs will now follow the user, thus avoiding strain on the users foot, knee and hip joints (Illustration 1).

It will often be advantageous to use a Support Belt, Sling or SmartMove with Pediturn.

## Notice

### Special features

Always check the product before use and after washing.

Never use a defective product. If the product shows signs of wear-and-tear, it must be scrapped.

Read these instructions carefully.

It is important that assistants receive instruction in manual handling. Etac offers advice and training for assistants. For further information, contact Etac.

Always use the correct manual handling techniques

Encourage the client to assist where possible.

To ensure that the client feels safe and that every manual handling is smooth, always plan the manual handling in advance.



Always make a risk assessment, and secure that the assistive product can be used at the individual user and in combination with other devices that it is safe for the user and caregivers.



Extra care is advised when using Pediturn with spastic users.



Do not take Pediturn apart – For safety reasons, if the components are taken apart, they may not be put together again. In such cases, the product must be scrapped.

If in any doubt - please contact Etac.



There is a risk that the user may slide off. Never leave the user alone on the edge of the bed.



Never leave the product on the floor after use.

## Materials

Top side: Toughtek  
Inner surface: 100% nylon.  
Backside: Toughtek  
Connector disc: synthetic.

Top side: ABS/TPU  
Inner surface: HDPE  
Backside: ABS/TPU  
Connection: Brass and steel

## Cleaning

The product should be checked regularly, preferably each time it is used, and especially after wash.

Check that there is no damage to seams or fabric.

### Washing instructions:

Can be cleaned with a solvent-free cleaning agent with a pH level between 5-9, or a 70% disinfection solution.



**Never try to repair a product yourself.**  
**Never use a defective product.**



## Articles

| Article no. | Description                             | Size (mm) |
|-------------|---|-----------|
| IM99836GT   | Pediturn turnplate, soft, for floor use | Ø400      |
| IM99700     | Pediturn turnplate, hard, for floor use | Ø380      |

## Combinations

| Article no. | Description                      | Size (mm)        |
|-------------|----------------------------------|------------------|
| IM401       | Butterfly, glide board           | W320 x L660      |
| IM403       | 3B Board                         | W225 x L765      |
| IM404       | E-Board                          | W330 x L600 x H5 |
| IM405       | E-Board                          | W330 x L750 x H6 |
| IM408       | E-Board                          | W250 x L600 x H5 |
| IM410       | E-Board                          | W200 x L450 x H5 |
| IM409       | Dolphin toilet glide board       | L690             |
| IM426       | SmartMove, handles               | W210 x L600      |
| IM428       | Sling, 2x4 catching loops        | W160 x L1900     |
| IM428K      | Sling, 2x4 catching loops        | W160 x L1200     |
| IM460PU     | OneManSling                      | W80 x L2700      |
| IM8017015   | SupportBelt, 11 handles, X-large | W150 x L1700     |
| IM8015013   | SupportBelt, 8 handles, large    | W130 x L1500     |
| IM8013013   | SupportBelt, 6 handles, medium   | W130 x L1300     |
| IM8010513   | SupportBelt, 5 handles, small    | W130 x L1050     |
| IM8010509   | SupportBelt, X-small             | W90 x L1050      |
| IM8009009   | SupportBelt, XX-small            | W90 x L900       |

# Service Information

**Thank you for choosing an Etac product.** If the customer makes adjustments, repairs or combinations not predetermined by Etac, the Etac CE certification and Etac warranty will be voided.

**Warranty:** Two-year warranty on material and manufacturing defects, provided that the product is used correctly. Before taking a product in service always make a risk assesment according to national and/or local legislation.

## First inspection:

- Is the packaging intact?
- Read the label on the packaging and check the article no. and product description
- Check that Short Instruction is enclosed – updated User Manual/Instruction for use can be downloaded from [www.etac.com](http://www.etac.com) or contact your Etac Customer Service or the local distributor.
- Check the label on the product - does it include article no., product description, lot/batch no., cleaning instructions and supplier name?

## Periodic Inspection:

- Make sure that your Manual transfer system always is in a perfect condition.
- After wash – always check materials, stitching, handles, buckles.
- If the product shows signs of wear and tear, it must be removed from service immediately.
- Lot no/Batch no:

|                 |   |                |   |   |   |   |   |   |   |
|-----------------|---|----------------|---|---|---|---|---|---|---|
| x               | x | x              | x | x | x | x | x | x | x |
| Production year |   | Running number |   |   |   |   |   |   |   |



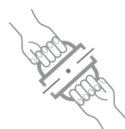
### Visual inspection/Check the product:

Ensure that the materials, seams, stitching, handles, buckles are intact/faultless.



### Stability test:

Try to bend the product verify that it feels firm, stable and solid.



### Mechanical load or stress/Test handles:

Draw hard in the handles in opposite directions and control the material, seams and stitching.

Test buckles:

Lock the buckle and draw in opposite directions, control the buckle and the stitching.



### Test low/high friction:

Place the product on a firm surface or a bed, place your hands on the material and test the friction by pushing your hands down into the product.

Low friction – slides effortlessly

High friction – no sliding/moving

## Check always:

|   |  |
|---|--|
| <p>Manual transfer aids with handles, straps and buckles:</p> | <p>Manual transfer aids for sitting and lying transfer:</p>  |
| <p>Manual transfer aids with high or low friction:</p>        | <p>The product can be scrapped in accordance with national regulations</p> <p>Read the User Manual</p> |

If in doubt, please contact Etac Customer Service or local distributor for more information and guidance.

For more information about training and the use of these products, contact the Etac transfer experts – [www.etac.com](http://www.etac.com).



**Manufacture:**

Etac Immedia A/S  
Egeskovvej 12  
DK-8700 Horsens, Denmark  
etac.immedia@etac.com

**Export:**

Etac Immedia A/S  
Egeskovvej 12  
DK-8700 Horsens  
etac.immedia@etac.com  
www.etac.com/exp

Etac Sverige AB  
Box 203, 334 24 Anderstorp, S  
Tel +46 371-58 73 00  
Fax +46 371-58 73 90  
info@etac.se www.etac.se

Etac AS  
Pb 249, 1501 Moss, N  
Tel +47 815 69 469  
Fax +47 69 27 09 11  
hovedkontor@etac.no www.etac.no

Etac A/S  
Egeskovvej 12, 8700 Horsens, DK  
Tel +45 79 68 58 33  
Fax +45 75 68 58 40  
info@etac.dk www.etac.dk

Etac GmbH  
Bahnhofstraße 131, 45770 Marl, D  
Tel +49 236 598 710  
Fax +49 236 598 6115  
info@etac.de www.etac.de

Etac R82 BV  
Tinweg 8, 8445 PD Heerenveen, NL  
Tel +31 72 547 04 39  
Fax +31 72 547 13 05  
info.holland@etac.com www.etac.com

R82 UK Ltd.  
Unit D4A, Coombswood Business Park, East Coombswood Way,  
Halesowen, West Midlands B62 8BH, UK  
Tel 0121 561 2222  
Fax 0121 559 5437  
enquiries@etac.uk.R82.com www.etac.com/uk

R82 Inc.  
12801 E. Independence Blvd., P.O. Box 1739, Matthews, NC 28106, US  
Tel 1 800 336 7684  
Fax 704 882 0751  
information@r82.com www.r82.com



Creating possibilities