



# BRODA<sup>®</sup>

*Comfort is Essential*

***LATITUDE***  
***PEDAL ROCKER***

## ENHANCED MOBILITY AND FREEDOM FOR MEMORY CARE

Ergonomically designed, the Pedal Rocker enables patients to self propel with their hands or feet and gently rock-increasing mobility and independence.



- 1 INFINITELY ADJUSTABLE SEAT TILT
- 2 CAREGIVER-ACTIVATED ROCKING
- 3 ADJUSTABLE ROCKING TENSION
- 4 HEIGHT ADJUSTABLE ARMRESTS
- 5 ADJUSTABLE SEAT TO FLOOR HEIGHT
- 6 REMOVABLE WINGS FOR UPPER LATERAL SUPPORT

### PATIENT BENEFITS



Rocking motion helps calm agitation and absorb rigid movements, creating a soothing effect.



Posterior tilt improves posture, redistributes pressure and aids in fall prevention (seat tilt and rocking combine to achieve 33° seat tilt).



Front pivot seat tilt enhances visual orientation, and encourages self-mobility with proper foot on floor positioning. (Shown with optional mag wheels and aluminum front casters)



Optional front mount mag wheels facilitate hand propulsion allowing patients to socialize and engage in their surroundings.

### CAREGIVER AND FACILITY BENEFITS

- Provides supportive stable positioning.
- Aids in the maintenance of skin integrity.
- Tilt provides ease of use for frequent repositioning.
- Design provides safety and stability helping to reduce risk of injury.
- Provides stimulation and contentment - excellent for memory care.

## COMFORT TENSION SEATING® PROVIDES

- Long term seating comfort
- Conforming support for proper pelvic positioning
- Improved air flow, decreasing heat and moisture build up
- Pressure redistribution that aids in maintaining skin integrity
- Accommodation for conditions such as kyphosis and lordosis

## SPECIFICATIONS

Frame	16 Gauge tubular steel frame
Seat & Backrest	BRODA Comfort Tension Seating®
Degrees of Tilt	18°, up to 33° When combined with rocking
Standard Seat Width	16", 18", 20" (40cm, 45cm, 50cm)
Custom Seat Width	22" (55cm)
Standard Seat Depth	17", 18.5" (43cm, 46cm)
Custom Seat Depth	15.5", 20" (39cm, 50cm)
Seat Height	Adjustable 14" to 19" (35cm-48cm)
Front Casters	5" Front total lock
Rear Casters	5" Fixed
Mag Wheel Upgrade	20" or 22" Front or rear mount (50cm or 55cm)
Weight Capacity	250 lbs. (114 kg)
Standard Padding	Headrest cushion, shoulder bolsters, lower side pads, seat and back pad with cover

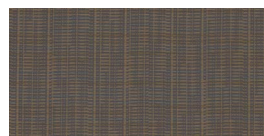
## COMMON ACCESSORIES

- Swing away footrests
- Elevating swing away legrest
- Solid or clear tray
- Padded tray cover
- Aluminum front casters
- Padded armrests
- O2 Holder
- IV Pole
- Half tray
- Thigh belt
- Full wrap vinyl seat and back covers
- BRODA app (additional positioning package)

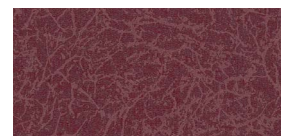


CTS Strapping flexes for individualized fit & superior comfort.

## UPHOLSTERY OPTIONS



INTERLACE  
ESPRESSO



RENAISSANCE  
BURGUNDY



RENAISSANCE  
CHARCOAL



SILVERTEX  
SAPPHIRE BLUE

## FRAME OPTIONS



GREY  
HAMMER



BLACK





HEALTHCARE DIVISION

[info@brodaseating.com](mailto:info@brodaseating.com)

p. 1-844-552-7632

[Brodaseating.com](http://Brodaseating.com)

©Broda USA, INC.

4/17