

## Steel Transport Chair

HCPCS: E1038

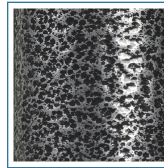


FIGURE A



FIGURE B

- Weighs 26 lbs
- Attractive silver vein finish (Figure A)
- Available in 17" or 19" seat widths
- Back folds down for storage and transport (Figure B)
- Swing-away footrests come standard
- Padded armrests provide additional comfort
- 8" casters in front and rear
- Comes with attractive nylon upholstery that is durable and easy-to-clean
- Standard rear wheel locks
- Comes with upholstery handles to fold chair
- Convenient cup holder can easily attach to chair Sold separately (Model# STDS1040S)

PRODUCTS	Description
TR37E-SV	Trans Chair Econ 17in Slv Vein 1/cs
TR39E-SV	TransChair,Econ 19in SlvVein,1/cs
SPECIFICATIONS	Description
Back Height	18"
Carton Shipping Weight	31 lbs
Overall Height	39"
Overall Length w/ Riggings	33"
Overall Width	21.5" (open)   8" (closed)   23.5" (open)   10.75" (closed)
Seat Dimensions	17" (W) x 16" (D)   19" (W) x 16" (D)
Seat To Floor Height	19"
Warranty	Limited Lifetime
Weight	26 lbs
Weight Capacity	250 lbs
ACCESSORIES	Description
STDS1040S	Cup Holder, Swivel,1BX,6/CS, BX