

Designed to make
everyday transfer
tasks easier





Caring is
attention
to detail

References: 1. Fray M et al. (2018) An evaluation of sit to stand devices for use in rehabilitation (whitepaper)

Only Arjo designed parts, which are designed specifically for the purpose, should be used on the equipment and products supplied by Arjo.

As our policy is one of continuous development we reserve the right to modify designs and specifications without prior notice.

® and ™ are trademarks belonging to the Arjo group of companies. © Arjo, March 2018.

At Arjo, we are committed to improving the everyday lives of people affected by reduced mobility and age-related health challenges. With products and solutions that ensure ergonomic patient handling, personal hygiene, disinfection, diagnostics, and the effective prevention of pressure ulcers and venous thromboembolism, we help professionals across care environments to continually raise the standard of safe and dignified care. Everything we do, we do with people in mind.

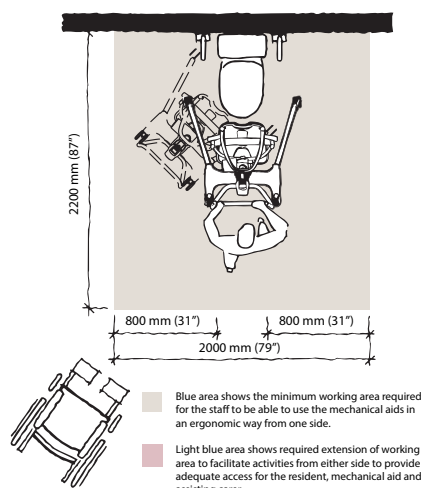
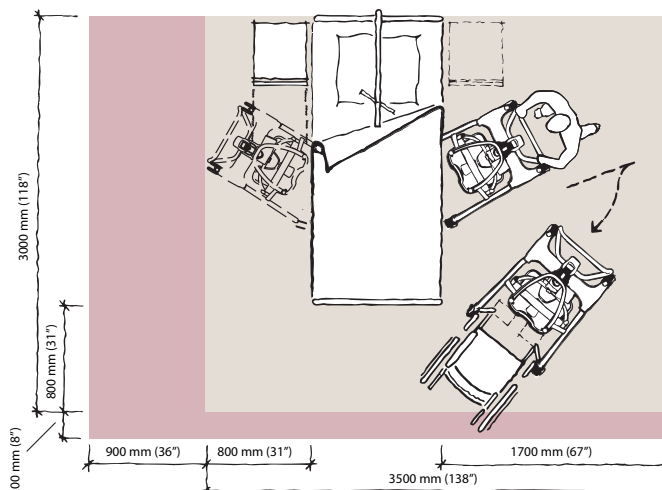
Arjo AB • Hans Michelsengatan 10 • 211 20 Malmö • Sweden • +46 10 335 4500

www.arjo.com

arjo

01.KK.29.2.GB-INT.1.ARJO

Product specifications



Product Information

Max safe working load	200 kg / 440 lbs
Weighing capacity	200 kg / 440 lbs
Weight	52 kg / 114,5 lbs
Weight with scale	53,6 kg / 118 lbs
Total length	996 mm 39 1/4"
Min lifting height	991 mm 39"
Max lifting height	1518 mm / 59 3/4"
Total height	1162 mm 45 3/4"
Height of chassis	100,5 mm
External width legs closed	660 mm / 26"
External width legs open	1029 mm / 40 1/2"
Battery	24V DC 4Ah
Lifter protection class	IP24
Handcontrol protection class	IPX7
Low friction castors, the rear two with brakes	
Battery Discharge Indicator (BDI) - displays remaining power and indicates when the battery needs charging	
Service meter - displays the total motor usage time	
Emergency stop and system failure override	

Option

Integrated scale

Approvals

EN/IEC 60601-1 (TÜV SÜD)

EN ISO 10535:2006 (TÜV SÜD)

Mobility gallery

Suitable for Carl



C Carl, who sits in a wheelchair and has little capacity to support himself

Please contact ArjoHuntleigh for further information on the Mobility Gallery™.



Designed to
make everyday
transfer tasks
easier

STANDING AND RAISING AID

Sara® Flex - details that make a difference

arjo

Caring is attention to detail

At Arjo, 60 years of experience have taught us that details are everything.

They are the difference between comfort and pain, a calm patient or a frightened patient, a caregiver that can work efficiently or a caregiver always trying to catch up. When moving a patient from a sitting to a standing position, details make all the difference.

Designed to make every-day transfer and care tasks easier, Sara® Flex from Arjo equips one caregiver with the ability to position a patient from a seated to a safe, secure and comfortable standing position, in one ergonomic movement.

It's the details that make every following transfer, whether it be to a wheelchair, the toilet, a shower chair or early mobilisation following surgery, a positive experience.



Carl mobility spectrum

SARA FLEX is specifically designed for patients and residents that are unable to mobilise without assistance, but who are able to contribute to the action or perform part of the action independently. Please contact Arjo for further information regarding the Mobility Gallery™



ALL STARTING FROM AN OPTIMISED POSITION.
FROM A SECURE SIT-TO-STAND POSITION

Facilitating
essential daily
transfer and
care tasks.



Optimised patient support

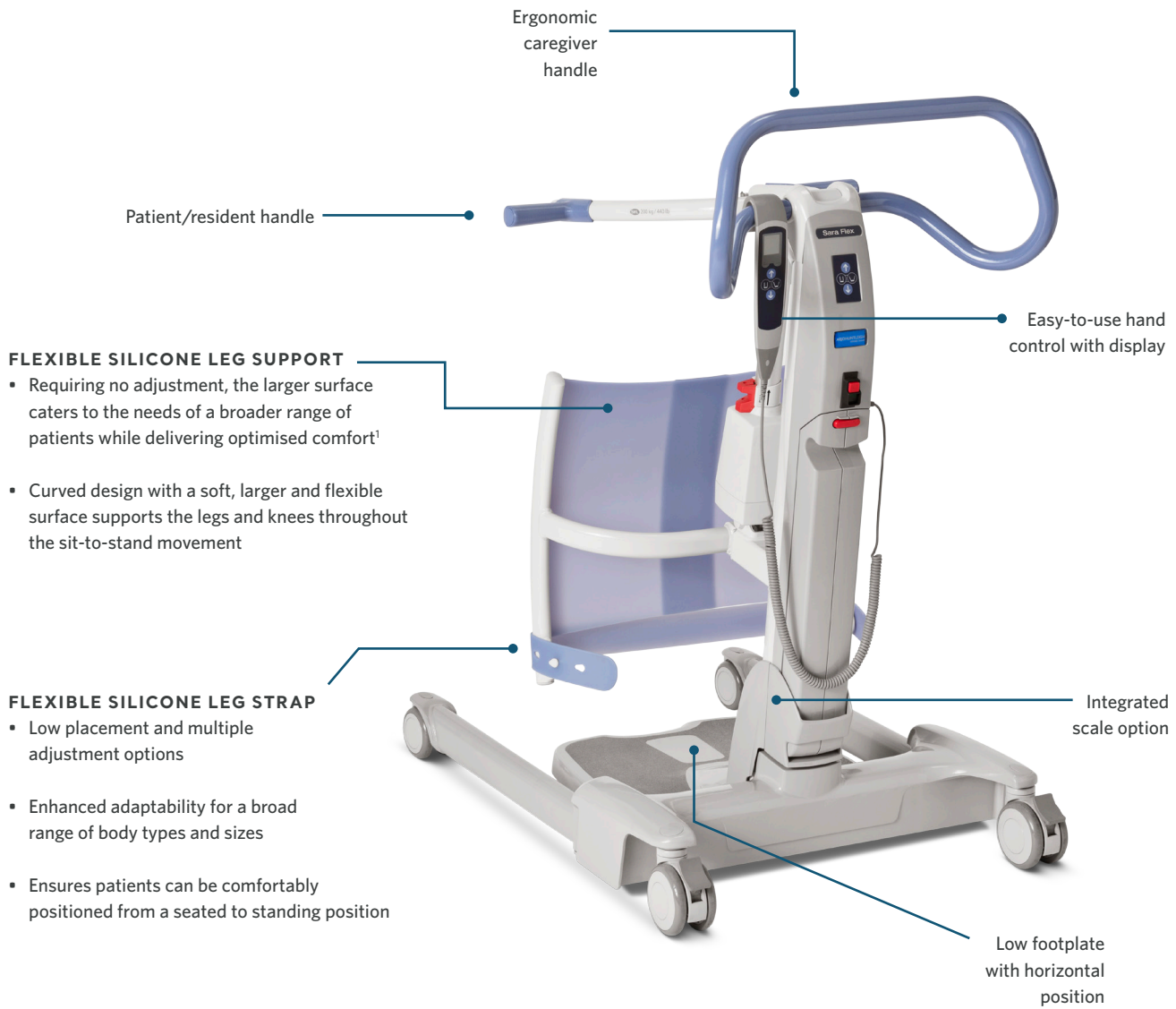
Promotes comfort and security throughout and at the completion of the sit-to-stand movement

Easy to use with enhanced manoeuvrability

Delivers enhanced manoeuvrability and requires no adjustment, ensuring ease of use

Comprehensive patient coverage

Enables one caregiver to perform sit-to-stand tasks for a wide range of patients in the Carl mobility spectrum



Ergonomic
caregiver
handle

Patient/resident handle

Easy-to-use hand
control with display

FLEXIBLE SILICONE LEG SUPPORT

- Requiring no adjustment, the larger surface caters to the needs of a broader range of patients while delivering optimised comfort¹
- Curved design with a soft, larger and flexible surface supports the legs and knees throughout the sit-to-stand movement

FLEXIBLE SILICONE LEG STRAP

- Low placement and multiple adjustment options
- Enhanced adaptability for a broad range of body types and sizes
- Ensures patients can be comfortably positioned from a seated to standing position

Integrated
scale option

Low footplate
with horizontal
position

Ergonomic forward movement

- Forward movement, in combination with the flexible leg support, enables an ergonomic and comfortable sit-to-stand movement¹

Small and light

- Keeps Sara Flex at an optimal size that is non-intrusive and suited to the needs of patients that may otherwise be intimidated by bulky or cumbersome handling equipment
- Designed with aesthetic appeal in mind, ensuring vulnerable patients remain calm during the sit-to-stand transfer

Low footplate with horizontal position

- Facilitates an ergonomic sit-to-stand movement that is specifically designed to feel smooth and natural for the patient
- Enables easy foot placement while supporting and enhancing the sit-to-stand movement

Easy-to-use hand control with display

- Ensures the sit-to-stand task is quick, minimally exertive and hassle-free
- Ensures caregivers can work closely with their patient and intuitively read weight or manoeuvre the lift

Patient handle

- Easy-to-grasp and angled patient handle helps ensure comfortable positioning of hands, wrists and elbows throughout the sit-to-stand movement

Caregiver handle

- Flexible grip with intuitive ergonomic efficiency