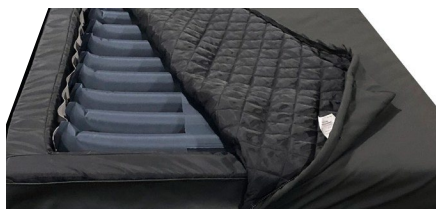


Permobil Therapeutic Surfaces & Mattresses

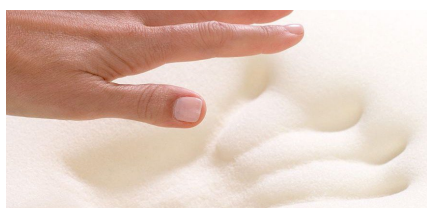


Key terms



Firm borders & bolsters

Firm perimeter borders on our many mattresses and surfaces ensure a solid transfer edge for improving safety and reducing entrapment risk. Domus 4 with foam edge (shown above) and Serene Air with foam edge air surfaces provide extra support for clients. New add-on bolsters with 6" wide transfer edges expands the 36" wide Domus 4 or Auto to 48" wide, and the Serene Air up to 60" wide.



High resiliency and Hybrid foam

High resiliency foam is a versatile foam used in many 5 Minds Mobility mattresses. It is considered to be a highly tensile surface, and can be cut to any size.

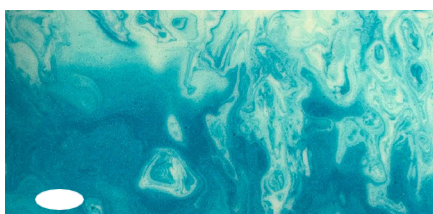
Our new Hybrid foam inserts for the Adapt 2 are even more supportive with 1.5" of high resiliency foam topped with 1.5" of Serene™ foam. Serene is similar to memory foam, but is even better for temperature regulation and breathability.



Vicair SmartCells

Vicair mattresses and inlays are filled with innovative individual air cells called SmartCells. These non-flowing air products offer superior performance with little to no maintenance for the user or caregiver.

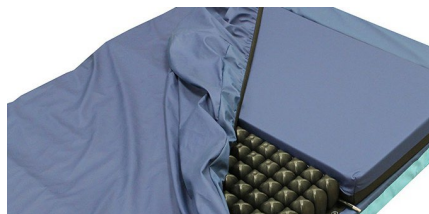
SmartCells have low surface friction which allows them to move easily against each other and to conform precisely to the body's contours. The number of SmartCells can also be adjusted to optimize pressure redistribution, positioning, and envelopment.



Gel swirl foam

Gel swirl foam provides enhanced comfort while reducing motion transfer across the mattress surface for an undisturbed sleep. The open cell structure promotes airflow allowing for excellent cooling. Gel swirl foam particles also:

- promote a cool, comfortable sleep
- ensure better heat conductivity than traditional visco elastic foam
- are non-toxic and hypo-allergenic



Recovery 5 covers

All foam mattresses and modular foam bases and inserts include a Recovery 5 anti-microbial cover for incontinent protection. It is removable, machine-washable, and fluid-proof. The Recovery 5 Ultra is an additional zippered enclosure cover for the full mattress (and inserts) with 4-way stretch and provides up to 6X more incontinent protection.

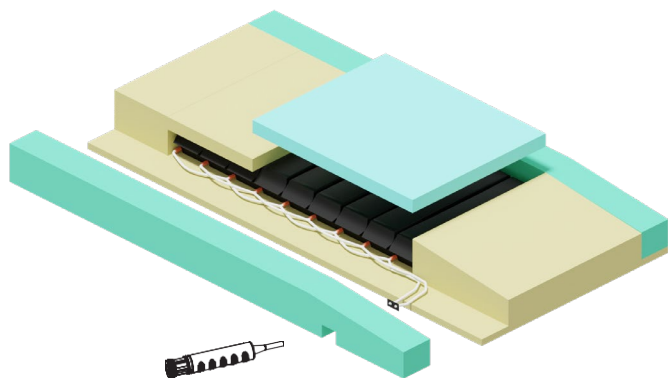
New! Bottom covers under most mattress are now made with high-strength Hercules vinyl fabric.

Therapeutic Surfaces

- **Mattress Overlays**

Atlas Hybrid

Non-powered foam and air surface with adjustable firmness



The Atlas Hybrid is a non-powered, self-adjusting mattress that utilizes equalization technology to provide maximum pressure redistribution for the prevention and treatment of pressure injuries. The multi-zone top has memory foam in the middle section for immersion plus a 5-degree sloped foot section made with Serene™ foam to help transfer excess pressure from the heels. Beneath the top layer, interconnected chambers provide pressure redistribution, and there are 4" wide firm borders to ensure a solid transfer edge.

A manual ROHO air pump can be used to easily adjust the softness/firmness of the chambers. When the pump is not being used, a valve closure kit is required. Both the closure kit and pump come included with the Atlas Hybrid.



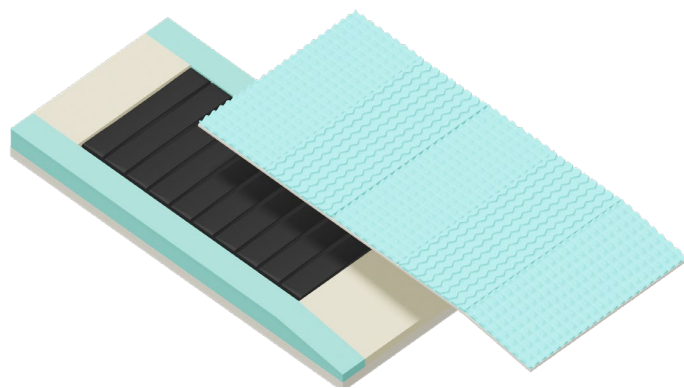
At a glance

- Suitable for vulnerable clients at risk for pressure injuries
- Interconnected chambers and valves for pressure redistribution
- ROHO pump adjusts the firmness
- Sloped foot section helps reduce pressure from heels
- 4" wide firm borders for safe transfers
- Fluid-resistant, four-way stretch cover
- Maximum client weight of up to 500-700 lb depending on size of surface
- Atlas Hybrid is available in three widths: 35" / 39" / 42" and 80"L x 7"H; custom sizes are available

Part Number	Description
ATL3580	ATLAS 35" x 80" HYBRID SYSTEM: FOAM SURFACE, TOP & BOTTOM COVERS; 500 LB WT CAP.
ATL3980	ATLAS 39" x 80" HYBRID SYSTEM: FOAM SURFACE, TOP & BOTTOM COVERS; 600 LB WT CAP.
ATL4280	ATLAS 42" x 80" HYBRID SYSTEM: FOAM SURFACE, TOP & BOTTOM COVERS; 700 LB WT CAP.

Atlas Auto Comfort

Non-powered foam and air surface with closed circuit



At a glance

- Suitable for vulnerable clients at risk for pressure injuries
- Interconnected chambers in a closed circuit for self-adjusting pressure redistribution
- Sloped foot section helps reduce pressure from heels
- 1" high convoluted foam top layer for comfort
- 4" wide firm borders for safe transfers
- Fluid-resistant, four-way stretch cover
- Maximum client weight of up to 500-700 lb depending on size of surface
- Atlas Auto Comfort is available in three widths: 35" / 39" / 42" and 80"L x 7"H; custom sizes are available

Atlas Auto Comfort uses equalization technology to provide maximum pressure redistribution to prevent pressure injuries or to support the healing process. Beneath the 1" top layer of convoluted high resiliency foam there are interconnected chambers in a closed circuit to provide self-adjusting pressure redistribution. Clients also benefit from 4" wide firm borders to ensure a solid transfer edge. Atlas Auto Comfort includes a 5-degree sloped foot section to help transfer excess pressure from the heels.

Part Number	Description
ATLAC3580	ATLAS AC 35" x 80" SYSTEM: FOAM SURFACE, TOP & BOTTOM COVERS; 500 LB WT CAP.
ATLAC3584	ATLAS AC 35" x 84" SYSTEM: FOAM SURFACE, TOP & BOTTOM COVERS; 500 LB WT CAP.
ATLAC3980	ATLAS AC 39" x 80" SYSTEM: FOAM SURFACE, TOP & BOTTOM COVERS; 600 LB WT CAP.
ATLAC3984	ATLAS AC 39" x 84" SYSTEM: FOAM SURFACE, TOP & BOTTOM COVERS; 600 LB WT CAP.
ATLAC4280	ATLAS AC 42" x 80" SYSTEM: FOAM SURFACE, TOP & BOTTOM COVERS; 700 LB WT CAP.
ATLAC4284	ATLAS AC 42" x 84" SYSTEM: FOAM SURFACE, TOP & BOTTOM COVERS; 700 LB WT CAP.

Vicair 415 mattress

Crafted with SmartCell technology



At a glance

- Suitable for vulnerable clients at risk for or with existing pressure injuries
- Easy to set up and low maintenance, can be used on any bedframe
- 36 compartments with SmartCell technology
- Low friction inner cover is fluid-proof and minimizes shear
- Loose fitting, fluid-proof outer cover encourages immersion and is easy to clean
- Foam layer built into the surface base
- Lightweight for easy transport (22 lb)
- Maximum client weight limit of up to 550 lb
- 36" x 80"L x 5.9"H; custom sizes are available

The Vicair Mattress is a premium pressure-relieving sleep solution known for its exceptional comfort and support. Crafted with innovative SmartCell technology, it adapts to your body's contours, ensuring an ideal balance between softness and firmness. Its durable construction provides longevity, while the materials help regulate temperature for a restful night's sleep.



The air-filled SmartCells in 36 zippered compartments make an extremely lightweight, non-powered, and low maintenance mattress that can be customized by adding/removing the SmartCells within. The combination of an inner and outer cover helps to minimize shear forces and optimize immersion, and there is also a 2" foam layer built into the surface base to prevent bottoming out. **Custom sizes are available.**

Part Number	Description
ARM415/LF/90200 New!	VICAIR 415 MATTRESS 36" x 80" w/ LOW FRICTION COVER; 550 LB WT CAP.
CUSTOM SIZES WITH LOW FRICTION COVER	

Therapeutic surfaces replacement covers

Part Number	Description
COV-DOM4EDG36	TOP COVER, DOMUS 4 w/ FOAM EDGE 36x80 (FLUID-RESISTANT, MULTI-WAY STRETCH, QUILTED, ZIPPERED)
COV-DOM4EDG42	TOP COVER, DOMUS 4 w/ FOAM EDGE 42x80 (FLUID-RESISTANT, MULTI-WAY STRETCH, QUILTED, ZIPPERED)
COV-DOM36	TOP COVER, DOMUS 4/AUTO 36x80 (SILVER* NYLON, FLUID-RESISTANT, QUILTED, ZIPPERED)
COV-SERA3680	TOP COVER, SERENE AIR 36x80 (SILVER* NYLON, FLUID-RESISTANT, QUILTED, ZIPPERED)
COV-SERA4280	TOP COVER, SERENE AIR 42x80 (SILVER* NYLON, FLUID-RESISTANT, QUILTED, ZIPPERED)
COV-SERA4880	TOP COVER, SERENE AIR 48x80 (SILVER* NYLON, FLUID-RESISTANT, QUILTED, ZIPPERED)
COV-SERAEDG36	TOP COVER, SERENE AIR w/ FOAM EDGE 36x80 (FLUID-RESISTANT, MULTI-WAY STRETCH, QUILTED, ZIPPERED)
COV-SERAEDG42	TOP COVER, SERENE AIR w/ FOAM EDGE 42x80 (FLUID-RESISTANT, MULTI-WAY STRETCH, QUILTED, ZIPPERED)
COV-PCOPT	TOP COVER, PRO-CARE OPTIMA (FLUID-RESISTANT, MULTI-WAY STRETCH, ZIPPERED)
COV-PCTURN	TOP COVER, PRO-CARE TURN (FLUID-RESISTANT, MULTI-WAY STRETCH, ZIPPERED)
COV-ATL3580	FULL ENCLOSURE COVER, ATLAS HYBRID 35x80 (FLUID-RESISTANT, MULTI-WAY STRETCH)
COV-ATL3980	FULL ENCLOSURE COVER, ATLAS HYBRID 39x80 (FLUID-RESISTANT, MULTI-WAY STRETCH)
COV-ATL4280	FULL ENCLOSURE COVER, ATLAS HYBRID 42x80 (FLUID-RESISTANT, MULTI-WAY STRETCH)
COV-ATLAC3580	FULL ENCLOSURE COVER, ATLAS AUTO COMFORT 35x80 (FLUID-RESISTANT, MULTI-WAY STRETCH)
COV-ATLAC3584	FULL ENCLOSURE COVER, ATLAS AUTO COMFORT 35x84 (FLUID-RESISTANT, MULTI-WAY STRETCH)
COV-ATLAC3980	FULL ENCLOSURE COVER, ATLAS AUTO COMFORT 39x80 (FLUID-RESISTANT, MULTI-WAY STRETCH)
COV-ATLAC3984	FULL ENCLOSURE COVER, ATLAS AUTO COMFORT 39x84 (FLUID-RESISTANT, MULTI-WAY STRETCH)
COV-ATLAC4280	FULL ENCLOSURE COVER, ATLAS AUTO COMFORT 42x80 (FLUID-RESISTANT, MULTI-WAY STRETCH)
COV-ATLAC4284	FULL ENCLOSURE COVER, ATLAS AUTO COMFORT 42x84 (FLUID-RESISTANT, MULTI-WAY STRETCH)
ARMCV415/LF/90200 New!	VICAIR LOW FRICTION COVER (36" x 80")
CUSTOM SIZE VICAIR LOW FRICTION COVER	

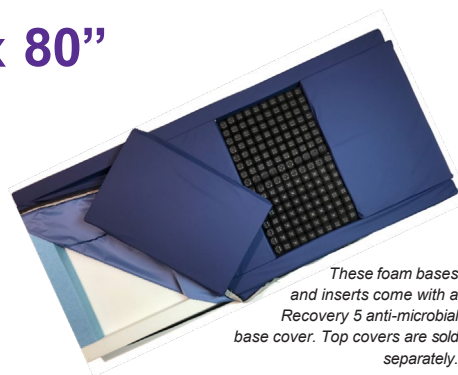
Note: Adapt 2 and Acute modular systems have their covers listed on their product pages.

Adapt 2 Series modular system 36" x 80"

The Adapt 2 mattress with SRT is an innovative way to reduce the effects of pressure, friction and shear within the body of the mattress. The 3" wide firm perimeter borders and 4" permanent gel foam foot border hold your choice of inserts in place without the need for snaps. The surface inserts can be configured based on the individual client's needs. **The removable top cover with its 360° zipper must be ordered separately.**

New! Vicair mattress inlay sections with included low friction cover can also be added to Adapt 2 systems.

Weight capacity: 350 lb



These foam bases and inserts come with a Recovery 5 anti-microbial base cover. Top covers are sold separately.

Part Number	Description
AD2-SYS1-36	ADAPT 2 SERIES SYSTEM 1 PKG. INCLUDES 1 ROHO MATTRESS SECTION (19" x 30")
AD2-SYS2-36	ADAPT 2 SERIES SYSTEM 2 PKG. INCLUDES 2 ROHO MATTRESS SECTIONS (19"x 30")
AD2-SYS3-36	ADAPT 2 SERIES SYSTEM 3 PKG. INCLUDES 3 ROHO MATTRESS SECTIONS (19" x 30")
AD2-SYS4-36	ADAPT 2 SERIES SYSTEM 4 PKG. INCLUDES 4 ROHO MATTRESS SECTIONS (19" x 30")
AD2-SYS5-36	ADAPT 2 SERIES SYSTEM 5 PKG. INCLUDES 2 ROHO MATTRESS SECTIONS (19" x 30")
UPGRADE	UPGRADE THE HIGH RESILIENCY FOAM INSERTS TO HYBRID FOAM
SUBSTITUTION New!	SWITCH ROHO MATTRESS SECTION TO VICAIR INLAY



System 1 AD2-SYS1-36	System 2 AD2-SYS2-36	System 3 AD2-SYS3-36	System 4 AD2-SYS4-36	System 5 AD2-SYS5-36
Foam base covered with Recovery 5	Foam base covered with Recovery 5	Foam base covered with Recovery 5	Foam base covered with Recovery 5	Foam base covered with Recovery 5
1 x ROHO mattress section (19" x 30")	2 x ROHO mattress sections (19" x 30")	3 x ROHO mattress sections (19" x 30")	4 x ROHO mattress sections (19" x 30")	2 x ROHO mattress sections (19" x 30")
1 x AD2-3030FS	1 x AD2-3030FS	1 x AD2-1930FS		1 x AD2-3030FS
1 x AD2-1930FS	1 x AD2-830FS			1 x AD2-830FS
1 x AD2-830FS				

Top cover options

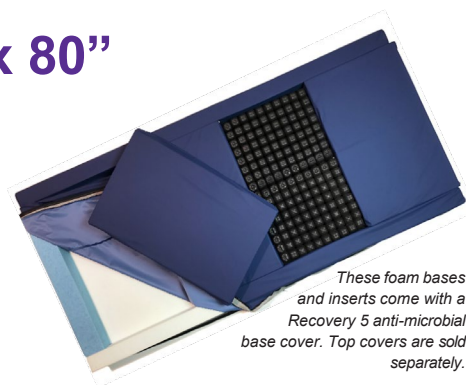
Part Number	Description
AD2-TC3680	TOP COVER, ADAPT 2 36x80 (RECOVERY 5 FLUID-RESISTANCE, MULTI-WAY STRETCH, ZIPPERED)
AD2-TC3680-R5U	TOP COVER, ADAPT 2 36x80 (RECOVERY 5 ULTRA SUPERIOR FLUID-RESISTANCE, MULTI-WAY STRETCH, ZIPPERED)

Adapt 2 Series modular system 39" x 80"

The Adapt 2 mattress with SRT is an innovative way to reduce the effects of pressure, friction and shear within the body of the mattress. The 3" wide firm perimeter borders and 4" permanent gel foam foot border hold your choice of inserts in place without the need for snaps. The surface inserts can be configured based on the individual client's needs. **The removable top cover with its 360° zipper must be ordered separately.**

New! Vicair mattress inlay sections with included low friction cover can also be added to Adapt 2 systems.

Weight capacity: 350 lb



These foam bases and inserts come with a Recovery 5 anti-microbial base cover. Top covers are sold separately.

Modular therapeutic systems

Part Number	Description
AD2-SYS1-39	ADAPT 2 SERIES SYSTEM 1 PKG. INCLUDES 1 ROHO MATTRESS SECTION (19" x 34")
AD2-SYS2-39	ADAPT 2 SERIES SYSTEM 2 PKG. INCLUDES 2 ROHO MATTRESS SECTIONS (19"x 34")
AD2-SYS3-39	ADAPT 2 SERIES SYSTEM 3 PKG. INCLUDES 3 ROHO MATTRESS SECTIONS (19" x 34")
AD2-SYS4-39	ADAPT 2 SERIES SYSTEM 4 PKG. INCLUDES 4 ROHO MATTRESS SECTIONS (19" x 34")
AD2-SYS5-39	ADAPT 2 SERIES SYSTEM 5 PKG. INCLUDES 2 ROHO MATTRESS SECTIONS (19" x 34")
UPGRADE	UPGRADE THE HIGH RESILIENCY FOAM INSERTS TO HYBRID FOAM
SUBSTITUTION New!	SWITCH ROHO MATTRESS SECTION TO VICAIR INLAY

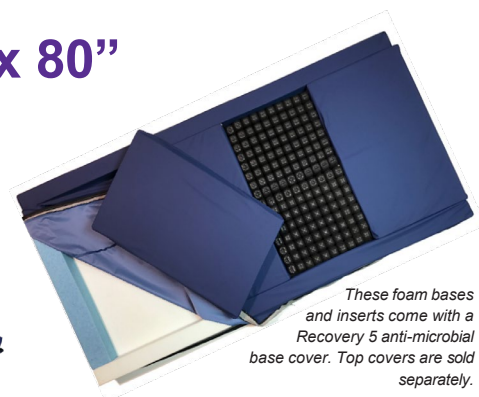
<div>AD2-3033FS</div> <div>AD2-833FS</div> <div>AD2-1933FS</div>	<div>AD2-3033FS</div> <div>AD2-833FS</div>	<div>AD2-1933FS</div>	<div>AD2-3033FS</div> <div>AD2-833FS</div>	<div>AD2-3033FS</div> <div>AD2-833FS</div>
System 1 AD2-SYS1-39	System 2 AD2-SYS2-39	System 3 AD2-SYS3-39	System 4 AD2-SYS4-39	System 5 AD2-SYS5-39
Foam base covered with Recovery 5	Foam base covered with Recovery 5	Foam base covered with Recovery 5	Foam base covered with Recovery 5	Foam base covered with Recovery 5
1 x ROHO mattress section (19" x 34")	2 x ROHO mattress sections (19" x 34")	3 x ROHO mattress sections (19" x 34")	4 x ROHO mattress sections (19" x 34")	2 x ROHO mattress sections (19" x 34")
1 x AD2-3033FS	1 x AD2-3033FS	1 x AD2-1933FS		1 x AD2-3033FS
1 x AD2-1933FS	1 x AD2-833FS			1 x AD2-833FS
1 x AD2-833FS				

Top cover options

Part Number	Description
AD2-TC3980	TOP COVER, ADAPT 2 39x80 (RECOVERY 5 FLUID-RESISTANCE, MULTI-WAY STRETCH, ZIPPERED)
AD2-TC3980-R5U	TOP COVER, ADAPT 2 39x80 (RECOVERY 5 ULTRA SUPERIOR FLUID-RESISTANCE, MULTI-WAY STRETCH, ZIPPERED)

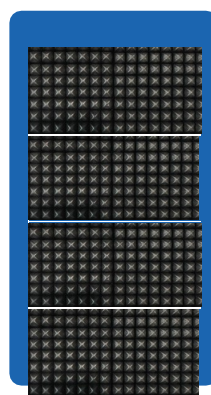
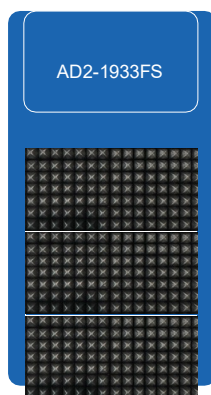
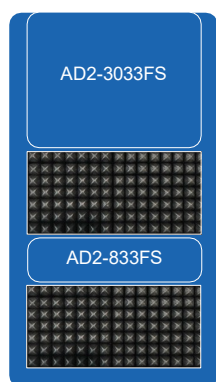
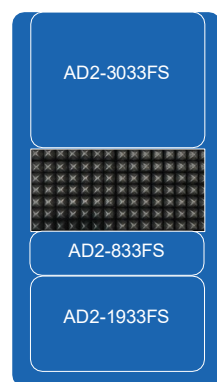
Adapt 2 Series modular system 42" x 80"

The Adapt 2 mattress with SRT is an innovative way to reduce the effects of pressure, friction and shear within the body of the mattress. The 4.5" wide firm perimeter borders and 4" permanent gel foam foot border hold your choice of inserts in place without the need for snaps. The surface inserts can be configured based on the individual client's needs, and are the same size as the 39" insert options thanks to the addition of 1.5" of foam at each side border. **The removable top cover with its 360° zipper must be ordered separately.** **New!** Vicair mattress inlay sections with included low friction cover can also be added to Adapt 2 systems. Weight capacity: 350 lb



These foam bases and inserts come with a Recovery 5 anti-microbial base cover. Top covers are sold separately.

Part Number	Description
AD2-SYS1-42	ADAPT 2 SERIES SYSTEM 1 PKG. INCLUDES 1 ROHO MATTRESS SECTION (19" x 34") or VICAIR INLAY
AD2-SYS2-42	ADAPT 2 SERIES SYSTEM 2 PKG. INCLUDES 2 ROHO MATTRESS SECTIONS (19" x 34") or VICAIR INLAY
AD2-SYS3-42	ADAPT 2 SERIES SYSTEM 3 PKG. INCLUDES 3 ROHO MATTRESS SECTIONS (19" x 34") or VICAIR INLAY
AD2-SYS4-42	ADAPT 2 SERIES SYSTEM 4 PKG. INCLUDES 4 ROHO MATTRESS SECTIONS (19" x 34") or VICAIR INLAY
AD2-SYS5-42	ADAPT 2 SERIES SYSTEM 5 PKG. INCLUDES 2 ROHO MATTRESS SECTIONS (19" x 34") or VICAIR INLAY
UPGRADE	UPGRADE THE HIGH RESILIENCY FOAM INSERTS TO HYBRID FOAM
SUBSTITUTION New!	SWITCH ROHO MATTRESS SECTION TO VICAIR INLAY



System 1 AD2-SYS1-42	System 2 AD2-SYS2-42	System 3 AD2-SYS3-42	System 4 AD2-SYS4-42	System 5 AD2-SYS5-42
Foam base covered with Recovery 5	Foam base covered with Recovery 5	Foam base covered with Recovery 5	Foam base covered with Recovery 5	Foam base covered with Recovery 5
1 x ROHO mattress section (19" x 34")	2 x ROHO mattress sections (19" x 34")	3 x ROHO mattress sections (19" x 34")	4 x ROHO mattress sections (19" x 34")	2 x ROHO mattress sections (19" x 34")
1 x AD2-3033FS	1 x AD2-3033FS	1 x AD2-1933FS		1 x AD2-3033FS
1 x AD2-1933FS	1 x AD2-833FS			1 x AD2-833FS
1 x AD2-833FS				

Top cover options

Part Number	Description
AD2-TC4280	TOP COVER, ADAPT 2 42x80 (RECOVERY 5 FLUID-RESISTANCE, MULTI-WAY STRETCH, ZIPPERED)
AD2-TC4280-R5U	TOP COVER, ADAPT 2 42x80 (RECOVERY 5 ULTRA SUPERIOR FLUID-RESISTANCE, MULTI-WAY STRETCH, ZIPPERED)

Adapt 2 Series mattress bases & components

Size: 36" / 39" / 42" x 80", can be customized to any size (call for a quote). Insert options: foam or hybrid foam (flippable for longevity and ease of use and encased in Recovery 5 material), or ROHO® mattress section or Vicair® mattress inlay (with included low friction cover).

Top/Enclosure covers: **SOLD SEPARATELY**. The overall R5 top zippered cover provides extra incontinent protection. Or UPGRADE to the R5 Ultra top cover with 4-way stretch, is machine washable, and provides up to 6X more incontinent protection.

Part Number	Description
AD2-BASE3680	36" x 80" x 6" BASE COVERED WITH RECOVERY 5
Hybrid Foam Inserts	30" Wide
AD2-830HS	8" x 30" HYBRID FOAM SECTION
AD2-1930HS	19" x 30" HYBRID FOAM SECTION
AD2-3030HS	30" x 30" HYBRID FOAM SECTION
Foam Inserts	30" Wide
AD2-830FS	8" x 30" FOAM SECTION
AD2-1930FS	19" x 30" FOAM SECTION
AD2-3030FS	30" x 30" FOAM SECTION
ROHO or Vicair Inserts	
MATTSECT1610	19" x 30" ROHO NEOPRENE MATTRESS SECTION
ARM/INLAY/7548 New!	19" x 30" VICAIR MATTRESS INLAY SECTION w/ LOW FRICTION COVER
Covers	
AD2-TC3680	TOP COVER, ADAPT 2 36x80 (RECOVERY 5 FLUID-RESISTANCE, MULTI-WAY STRETCH, ZIPPERED)
AD2-TC3680-R5U	TOP COVER, ADAPT 2 36x80 (RECOVERY 5 ULTRA SUPERIOR FLUID-RESISTANCE, MULTI-WAY STRETCH, ZIPPERED)
AD2-BC3680	BASE COVER, ADAPT 2 36x80 (RECOVERY 5 FLUID-RESISTANCE, MULTI-WAY STRETCH)
COV-MATTSECT1610	FULL ENCLOSURE COVER, ROHO MATTSECT 19x30 (RECOVERY 5 FLUID-RESISTANCE, MULTI-WAY STRETCH)

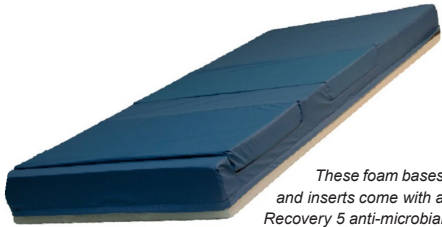
Note: the same inserts fit both the 39" and 42" width AD2 thanks to the 1.5" wider borders on the 42"

AD2-BASE3980	39" x 80" x 6" BASE COVERED WITH RECOVERY 5
AD2-BASE4280	42" x 80" x 6" BASE COVERED WITH RECOVERY 5
Hybrid Foam Inserts	33" Wide
AD2-833HS	8" x 33" HYBRID FOAM SECTION
AD2-1933HS	19" x 33" HYBRID FOAM SECTION
AD2-3033HS	30" x 33" HYBRID FOAM SECTION
Foam Inserts	33" Wide
AD2-833FS	8" x 33" FOAM SECTION
AD2-1933FS	19" x 33" FOAM SECTION
AD2-3033FS	30" x 33" FOAM SECTION
ROHO or Vicair Inserts	
MATTSECT3400	19" x 34" ROHO NEOPRENE MATTRESS SECTION
ARM/INLAY/9051 New!	20" x 36" VICAIR MATTRESS INLAY SECTION w/ LOW FRICTION COVER
Covers	
AD2-TC3980	TOP COVER, ADAPT 2 39x80 (RECOVERY 5 FLUID-RESISTANCE, MULTI-WAY STRETCH, ZIPPERED)
AD2-TC3980-R5U	TOP COVER, ADAPT 2 39x80 (RECOVERY 5 ULTRA SUPERIOR FLUID-RESISTANCE, MULTI-WAY STRETCH, ZIPPERED)
AD2-BC3980	BASE COVER, ADAPT 2 39x80 (RECOVERY 5 FLUID-RESISTANCE, MULTI-WAY STRETCH)
AD2-TC4280	TOP COVER, ADAPT 2 42x80 (RECOVERY 5 FLUID-RESISTANCE, MULTI-WAY STRETCH, ZIPPERED)
AD2-TC4280-R5U	TOP COVER, ADAPT 2 42x80 (RECOVERY 5 ULTRA SUPERIOR FLUID-RESISTANCE, MULTI-WAY STRETCH, ZIPPERED)
AD2-BC4280	BASE COVER, ADAPT 2 42x80 (RECOVERY 5 FLUID-RESISTANCE, MULTI-WAY STRETCH)
COV-MATTSECT3400	FULL ENCLOSURE COVER, ROHO MATTSECT 19x34 (RECOVERY 5 FLUID-RESISTANCE, MULTI-WAY STRETCH)
COV-MATTSECT3400-R5U	FULL ENCLOSURE COVER, ROHO MATTSECT 19x34 (RECOVERY 5 ULTRA SUPERIOR FLUID-RESISTANCE, MULTI-WAY STRETCH)

Acute modular system 36" x 80"

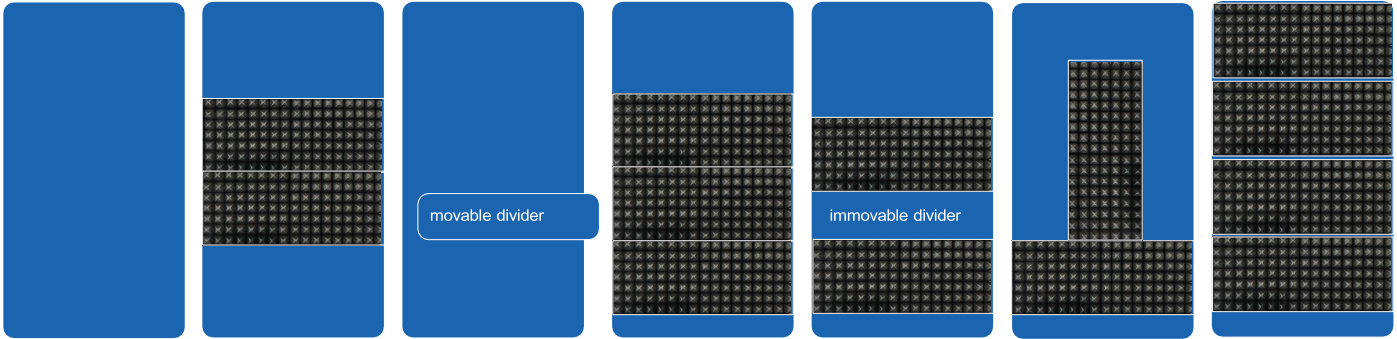
The Acute mattress is our high resiliency foam surface for the client at high risk of experiencing skin breakdown and may require the addition of ROHO® or Vicair® mattress sections. There are multiple configuration system options available to best meet their needs. **Overall top coverlet must be ordered separately.** Weight capacity: 350 lb

Size: 36" x 80", can be customized to any size (call for a quote)
 Insert options: foam or ROHO mattress section or Vicair inlay



These foam bases and inserts come with a Recovery 5 anti-microbial base cover. Top coverlets are sold separately.

Part Number	Description
AC-SYS1-PKG	ACUTE SYSTEM 1 PKG. INCLUDES 1 ROHO MATTRESS SECTION
AC-SYS2-PKG	ACUTE SYSTEM 2 PKG. INCLUDES 2 ROHO MATTRESS SECTIONS
AC-SYS3-PKG	ACUTE SYSTEM 3 PKG. INCLUDES 2 ROHO MATTRESS SECTIONS, MOVABLE DIVIDER
AC-SYS4-PKG	ACUTE SYSTEM 4 PKG. INCLUDES 3 ROHO MATTRESS SECTIONS
AC-SYS5-PKG	ACUTE SYSTEM 5 PKG. INCLUDES 2 ROHO MATTRESS SECTIONS, IMMOVABLE DIVIDER
AC-SYS6-PKG	ACUTE SYSTEM 6 PKG. INCLUDES 2 ROHO MATTRESS SECTIONS, T-SHAPE OPENING
AC-SYS7-PKG	ACUTE SYSTEM 7 PKG. INCLUDES 4 ROHO MATTRESS SECTIONS
SUBSTITUTION New!	SWITCH ROHO MATTRESS SECTION TO VICAIR INLAY



Acute system 1	Acute system 2	Acute system 3	Acute system 4	Acute system 5	Acute system 6	Acute system 7
Foam base covered with Recovery 5	Foam base covered with Recovery 5	Foam base covered with Recovery 5, movable divider included	Foam base covered with Recovery 5	Foam base covered with Recovery 5, immovable divider	Foam base covered with Recovery 5, T-shape opening	Foam base covered with Recovery 5
1 x ROHO mattress section (19" x 34")	2 x ROHO mattress sections (19" x 34")	2 x ROHO mattress sections (19" x 34")	3 x ROHO mattress sections (19" x 34")	2 x ROHO mattress sections (19" x 34")	2 x ROHO mattress sections (19" x 34")	4 x ROHO mattress sections (19" x 34")

Top cover options

Part Number	Description
AC-COVERLET9	FITTED ELASTIC TOP COVER, 36x80x9 (RECOVERY 5 FLUID-RESISTANCE, MULTI-WAY STRETCH)
AC-COVERLET9-R5U	FITTED ELASTIC TOP COVER, 36x80x9 (RECOVERY 5 ULTRA SUPERIOR FLUID-RESISTANCE, MULTI-WAY STRETCH)

Acute mattress bases & components

Part Number	Description
AC-SYS1	ACUTE SYSTEM 1 - SECTIONAL BASE COVERED WITH RECOVERY 5 w/ 19" OPENING
AC-SYS2	ACUTE SYSTEM 2 - SECTIONAL BASE COVERED WITH RECOVERY 5 w/ 38" OPENING
AC-SYS3	ACUTE SYSTEM 3 - SECTIONAL BASE COVERED WITH RECOVERY 5 w/ TWO 19" OPENINGS, MOVABLE DIVIDER
AC-SYS4	ACUTE SYSTEM 4 - SECTIONAL BASE COVERED WITH RECOVERY 5 w/ 57" OPENING
AC-SYS5	ACUTE SYSTEM 5 - SECTIONAL BASE COVERED WITH RECOVERY 5 w/ TWO 19" OPENINGS
AC-SYS6	ACUTE SYSTEM 6 - SECTIONAL BASE COVERED WITH RECOVERY 5 w/ TWO 19" OPENINGS (T-SHAPE)
AC-SYS7	ACUTE SYSTEM 7 - SECTIONAL BASE COVERED WITH RECOVERY 5 w/ 76" OPENING
Inserts	
AC-FI	ACUTE - FOAM INSERT 19" x 34"
MATTSECT3400	ROHO NEOPRENE MATTRESS SECTION 19" x 34"
ARM/INLAY/9051 New!	VICAIR MATTRESS INLAY SECTION 20" x 36"
Covers	
AC-COVERLET9	FITTED ELASTIC TOP COVER, 36x80x9 (RECOVERY 5 FLUID-RESISTANCE, MULTI-WAY STRETCH)
AC-COVERLET9-R5U	FITTED ELASTIC TOP COVER, 36x80x9 (RECOVERY 5 ULTRA SUPERIOR FLUID-RESISTANCE, MULTI-WAY STRETCH)
AC-BC3680	BASE COVER, ACUTE SYSTEM (RECOVERY 5 FLUID-RESISTANCE, MULTI-WAY STRETCH) *SPECIFY SYSTEM NUMBER
COV-MATTSECT3400	FULL ENCLOSURE COVER, ROHO MATTSECT 19x34 (RECOVERY 5 FLUID-RESISTANCE, MULTI-WAY STRETCH)
COV-MATTSECT3400-R5U	FULL ENCLOSURE COVER, ROHO MATTSECT 19x34 (RECOVERY 5 ULTRA SUPERIOR FLUID-RESISTANCE, MULTI-WAY STRETCH)

Gap fillers

Foam gap fillers with Recovery 5 covers are available in a variety of 6" and 8" heights to be used to lengthen the sleep surface of your mattress to meet your client's specific needs.

Part Number	Description
GF36-6-4	4" GAP FILLER x 36" WIDE x 6" HIGH
GF36-8-4	4" GAP FILLER x 36" WIDE x 8" HIGH
GF39-6-4	4" GAP FILLER x 39" WIDE x 6" HIGH
GF42-6-4	4" GAP FILLER x 42" WIDE x 6" HIGH
GF42-8-4	4" GAP FILLER x 42" WIDE x 8" HIGH
GF48-6-4	4" GAP FILLER x 48" WIDE x 6" HIGH
GF48-8-4	4" GAP FILLER x 48" WIDE x 8" HIGH

ROHO mattress overlays



From left to right: Prodigy®, SOFFLEX 2®, and ROHO® Dry Floatation®

At a glance

- Provides skin/soft tissue protection
- Adjustable to client's shape and weight, and to changes in position over time
- Accommodates other positioning devices beneath the overlay
- Can be reused with multiple individuals
- Provides immersion and envelopment
- Sections can be easily cleaned and disinfected
- Two-piece enclosure cover
- Maximum client weight of up to 300 lb for Prodigy, 330 lb for SOFFLEX 2, and no weight limit for ROHO Dry Floatation

These three mattress overlays are non-powered, air-filled, adjustable, zoned, reactive, full support surfaces that are intended to conform to an individual's shape to provide skin/soft tissue and deep tissue injury protection and an environment to facilitate wound healing. Flexible, interconnected air cells can be adjusted to match the individual's body contours and changing needs.

The first two are made of durable polyvinyl and comprise of three sections (27" long) to make an overlay that is 81" long, while the last one is made of neoprene and has four sections (19" long) for a 76" long overlay. As you compare the Prodigy, SOFFLEX 2, and ROHO DRY FLOATATION mattress overlays, you also see an increasing number of air cells.

With 720 air cells, the ROHO DRY FLOATATION neoprene mattress overlay allows for even greater conformity and better pressure distribution. Each cell is specially treated to minimize friction and resulting shear, and bariatric kit add-on sections are available to widen the overlay. Drainage holes in the base of the mattress overlay also allows for moisture to drain away from the body. The performance, efficiency and quality of this overlay system are unequaled in the industry.

Covers: The Prodigy & SOFFLEX 2 both use a two-piece zippered enclosure cover. It allows for the removal of the top portion for ease of cleaning if needed without removing the entire product from the bed mattress.

The ROHO neoprene mattress enclosure cover is also comprised of two pieces, but is also water-resistant, flame-retardant, and made of anti-microbial fabric that can be easily cleaned and/or disinfected. Attached straps allow the cover to be secured to a standard single bed mattress. Carrying handles allow for ease of transport of product.

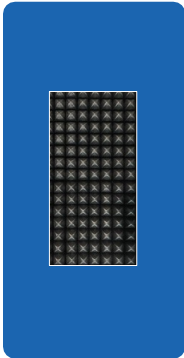
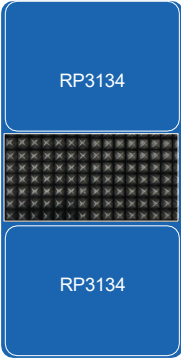
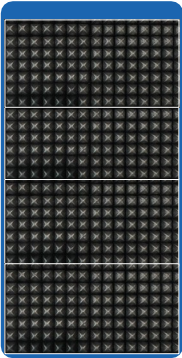


Part Number	Description
3800-1	PRODIGY SINGLE SECTION (27" x 35"); NEED 3 FOR FULL-SIZE OVERLAY; 300 LB WT CAP.
SFLX2EA	SOFFLEX 2 SINGLE SECTION (27" x 35"); NEED 3 FOR FULL-SIZE OVERLAY; 330 LB WT CAP.
MATTSECT3400	ROHO NEOPRENE MATTRESS SINGLE SECTION (19" x 34"); NEED 4 FOR FULL-SIZE OVERLAY; NO WT CAP.
MATTSECTBARI	NEOPRENE SECTION W/ SNAPS FOR BARI ADD-ON (19" x 34"); XXX LB WT CAP.
BARI310EA	BARIATRIC MATTRESS KIT, SINGLE SECTION (3 x 10 CELLS)
BARI310SET	BARIATRIC MATTRESS KIT SYSTEM, FOUR SECTIONS (3 x 10 CELLS)
BARI410EA	BARIATRIC MATTRESS KIT, SINGLE SECTION (4 x 10 CELLS)
BARI410SET	BARIATRIC MATTRESS KIT SYSTEM, FOUR SECTIONS (4 x 10 CELLS)
Covers	
COV-MR2PCSTD-P	2-PIECE ENCLOSURE COVER (36" x 81.75") FOR PRODIGY & SOFFLEX 2
6162M	2-PIECE ENCLOSURE INCONTINENT COVER (34" x 76") FOR ROHO NEOPRENE MATTRESS OVERLAY

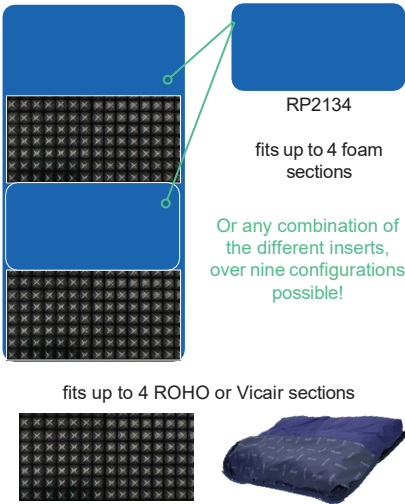
Leveling pads

By using a combination of leveling pads and ROHO® or Vicair® mattress sections to make an overlay, a high degree of pressure redistribution can be maintained. The pads are made with a high resiliency and stable foam base, and offer comfort and support. Simply mix and match the four sections to best suit your needs! Weight capacity: 250 lb/piece

Below are three additional options using air-filled mattress sections.



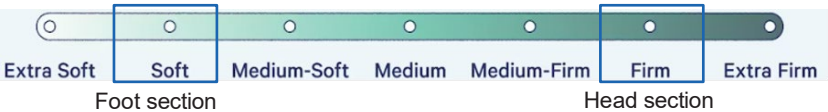
Option 1	Option 2	Option 3
fits 4 ROHO or Vicair sections	fits 1 ROHO or Vicair section	RP3480 (foam with precut centre)
	2 x RP3134	fits 1 ROHO or Vicair section



Part Number	Description
RP-2134	FOAM LEVELING PAD 21" x 34"
RP-3134	FOAM LEVELING PAD 31" x 34"
RP-3480	FOAM LEVELING PAD 34" x 80" WITH PRECUT CENTRE
MATTSECT3400	ROHO NEOPRENE MATTRESS SECTION 19" x 34"
UL3680	3" OVERLAY BASE WITH NYLON COVER; 36" x 80"
ARM/INLAY/9051 New!	VICAIR MATTRESS INLAY SECTION 20" x 36"
Covers	
AC-COVERLET3	FITTED ELASTIC TOP COVER, 36x80x3 (RECOVERY 5 FLUID-RESISTANCE, MULTI-WAY STRETCH)
AC-COVERLET3-R5U	FITTED ELASTIC TOP COVER, 36x80x3 (RECOVERY 5 ULTRA SUPERIOR FLUID-RESISTANCE, MULTI-WAY STRETCH)
COV-MATTSECT3400	FULL ENCLOSURE COVER, ROHO MATTSECT 19x34 (RECOVERY 5 FLUID-RESISTANCE, MULTI-WAY STRETCH)
COV-MATTSECT3400-R5U	FULL ENCLOSURE COVER, ROHO MATTSECT 19x34 (RECOVERY 5 ULTRA SUPERIOR FLUID-RESISTANCE, MULTI-WAY STRETCH)

Mattresses

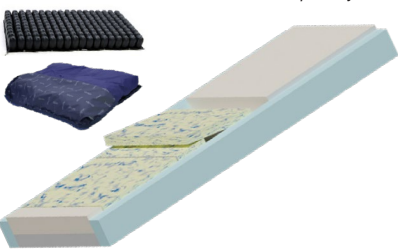
Adapt mattress



The Adapt modifiable foam surface with SRT addresses shearing forces present during client movement in bed or when raising the head or foot section of the bed, at the same time ensuring proper pressure redistribution. This mattress comes complete with three removable Gel swirl foam inserts, but allows for the addition of up to two Vicair® or ROHO® air mattress sections (sold separately). It comes with firm borders, a raised sleep surface, and full enclosure cover with a Recovery 5 top. Upgrade the mattress with a raised bolster or R5 Ultra cover (see below).

Note: Custom sizes available, please call for details.

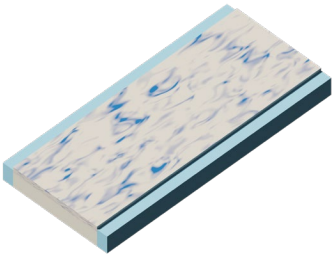
ROHO or Vicair mattress sections sold separately.



Part Number	Description
AD3680	ADAPT w/ SRT, 36" x 80" x 7" w/ R5 TOP COVER; 350 LB WT CAP.
AD3684	ADAPT w/ SRT, 36" x 84" x 7" w/ R5 TOP COVER; 350 LB WT CAP.
AD3980	ADAPT w/ SRT, 39" x 80" x 7" w/ R5 TOP COVER; 350 LB WT CAP.
AD4280	ADAPT w/ SRT, 42" x 80" x 7" w/ R5 TOP COVER; 500 LB WT CAP.
AD4284	ADAPT w/ SRT, 42" x 84" x 7" w/ R5 TOP COVER; 500 LB WT CAP.
AD4880	ADAPT w/ SRT, 48" x 80" x 7" w/ R5 TOP COVER; 500 LB WT CAP.
AD5480	ADAPT w/ SRT, 54" x 80" x 7" w/ R5 TOP COVER; 500 LB WT CAP.
AD6080	ADAPT w/ SRT, 60" x 80" x 7" w/ R5 TOP COVER; 500 LB WT CAP.
Other	
ARM/INLAY/7548 New!	19" x 30" VICAIR MATTRESS INLAY SECTION w/ COVER (FOR 36" WIDE MATTRESSES)
ARM/INLAY/9051 New!	20" x 36" VICAIR MATTRESS INLAY SECTION w/ COVER (FOR ALL OTHER MATTRESSES)
MATTSECT1610	19" x 30" ROHO NEOPRENE MATTRESS SECTION (FOR 36" WIDE MATTRESSES)
MATTSECT3400	19" x 34" ROHO NEOPRENE MATTRESS SECTION (FOR ALL OTHER MATTRESSES)
RB-UPGRADE	CUSTOM* RAISED BOLSTER UPGRADE FOR ANY MATTRESS SIZE; MINIMUM QUANTITY ORDER OF FIVE OF THE <u>SAME SIZE</u> (EVEN WITH A MIX OF ADAPT/ALLAY/ALIGN)
R5U-UPGRADE	ENHANCE THE COVER WITH R5 ULTRA FOR MAXIMUM INCONTINENCE PROTECTION

*These systems are custom and made to order. They are non-refundable and non-exchangeable.

Allay mattress

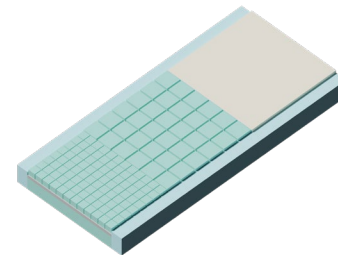


The Allay Gel swirl foam replacement surface with SRT is our premium option for the client wanting optimal pressure redistribution and comfort. The cooling benefit of the gel-infused Visco foam top combined with a supportive core make this the best option for users not requiring ROHO air mattress sections. It is reversible, has firm borders, a raised sleep surface, and full enclosure cover with a Recovery 5 top. Upgrade the mattress with a raised bolster or R5 Ultra cover (see below). **Note:** Custom sizes available, please call for details.

Part Number	Description
AL3680	ALLAY w/ SRT, 36" x 80" x 7" w/ R5 TOP COVER; 350 LB WT CAP.
AL3684	ALLAY w/ SRT, 36" x 84" x 7" w/ R5 TOP COVER; 350 LB WT CAP.
AL3980	ALLAY w/ SRT, 39" x 80" x 7" w/ R5 TOP COVER; 350 LB WT CAP.
AL4280	ALLAY w/ SRT, 42" x 80" x 7" w/ R5 TOP COVER; 500 LB WT CAP.
AL4284	ALLAY w/ SRT, 42" x 84" x 7" w/ R5 TOP COVER; 500 LB WT CAP.
AL4880	ALLAY w/ SRT, 48" x 80" x 7" w/ R5 TOP COVER; 500 LB WT CAP.
AL5480	ALLAY w/ SRT, 54" x 80" x 7" w/ R5 TOP COVER; 500 LB WT CAP.
AL6080	ALLAY w/ SRT, 60" x 80" x 7" w/ R5 TOP COVER; 500 LB WT CAP.
Other	
RB-UPGRADE	CUSTOM* RAISED BOLSTER UPGRADE FOR ANY MATTRESS SIZE; MINIMUM QUANTITY ORDER OF FIVE OF THE <u>SAME SIZE</u> (EVEN WITH A MIX OF ADAPT/ALLAY/ALIGN)
R5U-UPGRADE	ENHANCE THE COVER WITH R5 ULTRA FOR MAXIMUM INCONTINENCE PROTECTION

*These systems are custom and made to order. They are non-refundable and non-exchangeable.

Align mattress & Align Bariatric



The Align surface with SRT comes with firm borders, a raised sleep surface, and full enclosure cover with a Recovery 5 top. It is a unique multi-zone surface that provides differing immersion and envelopment levels that match the contours of the body. There is one piece of HR foam at the torso, with 4" square cuts in the foam under the sacrum, and 2" square cuts under the heels to release the surface tension. The foam density and weight capacity are the differences for our Align & Align Bariatric options. Upgrade the mattress with a raised bolster or R5 Ultra cover (see below).

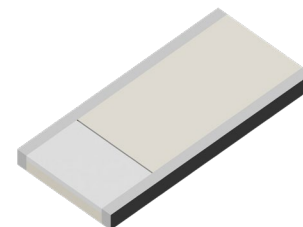
Note: Custom sizes available, please call for details.

Part Number	Description
A3680	ALIGN w/ SRT - HR FOAM, 36" x 80" x 7" w/ R5 TOP COVER; 350 LB WT CAP.
A3684	ALIGN w/ SRT - HR FOAM, 36" x 84" x 7" w/ R5 TOP COVER; 350 LB WT CAP.
A3980	ALIGN w/ SRT - HR FOAM, 39" x 80" x 7" w/ R5 TOP COVER; 350 LB WT CAP.
A4280	ALIGN w/ SRT - HR FOAM, 42" x 80" x 7" w/ R5 TOP COVER; 500 LB WT CAP.
A4284	ALIGN w/ SRT - HR FOAM, 42" x 84" x 7" w/ R5 TOP COVER; 500 LB WT CAP.
A4880	ALIGN w/ SRT - HR FOAM, 48" x 80" x 7" w/ R5 TOP COVER; 500 LB WT CAP.
A5480	ALIGN w/ SRT - HR FOAM, 54" x 80" x 7" w/ R5 TOP COVER; 500 LB WT CAP.
A6080	ALIGN w/ SRT - HR FOAM, 60" x 80" x 7" w/ R5 TOP COVER; 500 LB WT CAP.
Other	
RB-UPGRADE	CUSTOM* RAISED BOLSTER UPGRADE FOR ANY MATTRESS SIZE; MINIMUM QUANTITY ORDER OF FIVE OF THE <u>SAME SIZE</u> (EVEN WITH A MIX OF ADAPT/ALLAY/ALIGN)
R5U-UPGRADE	ENHANCE THE COVER WITH R5 ULTRA FOR MAXIMUM INCONTINENCE PROTECTION

BARIATRIC	
A3680B	BARIATRIC HIGH DENSITY FOAM w/ SRT, 36" x 80" x 7" w/ R5 TOP COVER; 600 LB WT CAP.
A3980B	BARIATRIC HIGH DENSITY FOAM w/ SRT, 39" x 80" x 7" w/ R5 TOP COVER; 600 LB WT CAP.
A4280B	BARIATRIC HIGH DENSITY FOAM w/ SRT, 42" x 80" x 7" w/ R5 TOP COVER; 600 LB WT CAP.
A4880B	BARIATRIC HIGH DENSITY FOAM w/ SRT, 48" x 80" x 7" w/ R5 TOP COVER; 800 LB WT CAP.
A5480B	BARIATRIC HIGH DENSITY FOAM w/ SRT, 54" x 80" x 7" w/ R5 TOP COVER; 800 LB WT CAP.
A6080B	BARIATRIC HIGH DENSITY FOAM w/ SRT, 60" x 80" x 7" w/ R5 TOP COVER; 800 LB WT CAP.
Other	
RB-UPGRADE	CUSTOM* RAISED BOLSTER UPGRADE FOR ANY MATTRESS SIZE; MINIMUM QUANTITY ORDER OF FIVE OF THE <u>SAME SIZE</u> (EVEN WITH A MIX OF ADAPT/ALLAY/ALIGN)
R5U-UPGRADE	ENHANCE THE COVER WITH R5 ULTRA FOR MAXIMUM INCONTINENCE PROTECTION

*These systems are custom and made to order. They are non-refundable and non-exchangeable.

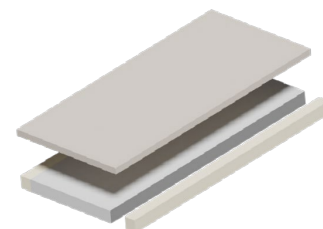
Sömn mattress



Sömn is a premium mattress ideal for long-term care with their 3" wide transfer edges on both sides that help reduce the risk of falls, and for keeping the client in a central position. This layered foam surface is our firmer option with a 4" base layer and 2" top layer with a Serene™ foam section at the heel. Sömn comes with fluid-resistant Startex full enclosure cover.

Part Number	Description
SOMN3680	SÖMN, 36" x 80" x 6" w/ STARTEX COVER; 350 LB WT CAP.
SOMN3980	SÖMN, 39" x 80" x 6" w/ STARTEX COVER; 350 LB WT CAP.
SOMN4280	SÖMN, 42" x 80" x 6" w/ STARTEX COVER; 350 LB WT CAP.
SOMN4880	SÖMN, 48" x 80" x 6" w/ STARTEX COVER; 500 LB WT CAP.

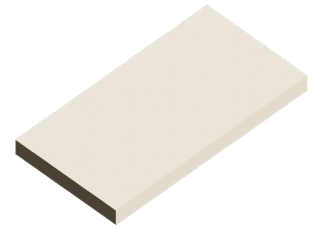
Koppla mattress



Koppla is a premium mattress ideal for long-term care with their 3" wide transfer edges on both sides that help reduce the risk of falls, and for keeping the client in a central position. This layered foam surface is our softest option with a 4" base layer, plus a 2" overall top layer of Serene™ foam that also covers the transfer edges. Koppla comes with fluid-resistant Startex full enclosure cover.

Part Number	Description
KOPPLA3680	KOPPLA, 36" x 80" x 6" w/ STARTEX COVER; 350 LB WT CAP.
KOPPLA3980	KOPPLA, 39" x 80" x 6" w/ STARTEX COVER; 350 LB WT CAP.
KOPPLA4280	KOPPLA, 42" x 80" x 6" w/ STARTEX COVER; 350 LB WT CAP.
KOPPLA4880	KOPPLA, 48" x 80" x 6" w/ STARTEX COVER; 500 LB WT CAP.

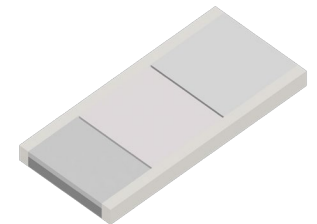
Optima 2 mattress



Optima 2 mattresses focus on comfort, safety, durability, and budget. They come with a waterproof nylon cover and a foam core constructed of 100% medical grade environmentally friendly non-allergenic foam. Mattress is reversible for longer product life.

Part Number	Description
OPT2-3680	OPTIMA 2, 36" x 80" x 6" w/ NYLON TOP COVER; 350 LB WT CAP.
OPT2-3980	OPTIMA 2, 39" x 80" x 6" w/ NYLON TOP COVER; 350 LB WT CAP.
OPT2-4280	OPTIMA 2 XT, 42" x 80" x 6" w/ NYLON TOP COVER; 350 LB WT CAP.
OPT2-4880	OPTIMA 2 XT, 48" x 80" x 6" w/ NYLON TOP COVER; 500 LB WT CAP.

Symmetry mattress



Symmetry is a multi-zone surface with three distinct areas with a softer foam at the heel for off-loading. It also includes firm side borders for secure transfers in/out of bed, and for keeping the client in a central position. Symmetry has a multi-way stretch, fluid-resistant cover which provides incontinent protection.

Note: Fully waterproof nylon cover option now available.

Part Number	Description
SYM-3680	SYMMETRY, 36" x 80" x 6" w/ FLUID-RESISTANT TOP COVER & FIRM BORDERS; 350 LB WT CAP.
SYM-3980	SYMMETRY, 39" x 80" x 6" w/ FLUID-RESISTANT TOP COVER & FIRM BORDERS; 350 LB WT CAP.
SYM-4280	SYMMETRY XT, 42" x 80" x 6" w/ FLUID-RESISTANT TOP COVER & FIRM BORDERS; 350 LB WT CAP.
SYM-4880	SYMMETRY XT, 48" x 80" x 6" w/ FLUID-RESISTANT TOP COVER & FIRM BORDERS; 500 LB WT CAP.

Mattress replacement covers

Recovery 5 and Recovery 5 Ultra replacement enclosure covers with handles, including the new high-strength Hercules base cover, for **Adapt, Allay, and Align** mattresses. Custom sizes are available. If ordering a custom raised bolster mattress, specialized raised bolster covers are available.



Raised bolster Recovery 5 cover shown above.

Part Number	Description
COV-REPL3680	FULL ENCLOSURE COVER, ADAPT/ALLAY/ALIGN 36x80 (RECOVERY 5 FLUID-RESISTANCE, MULTI-WAY STRETCH)
COV-REPL3684	FULL ENCLOSURE COVER, ADAPT/ALLAY/ALIGN 36x84 (RECOVERY 5 FLUID-RESISTANCE, MULTI-WAY STRETCH)
COV-REPL3980	FULL ENCLOSURE COVER, ADAPT/ALLAY/ALIGN 39x80 (RECOVERY 5 FLUID-RESISTANCE, MULTI-WAY STRETCH)
COV-REPL4280	FULL ENCLOSURE COVER, ADAPT/ALLAY/ALIGN 42x80 (RECOVERY 5 FLUID-RESISTANCE, MULTI-WAY STRETCH)
COV-REPL4284	FULL ENCLOSURE COVER, ADAPT/ALLAY/ALIGN 42x84 (RECOVERY 5 FLUID-RESISTANCE, MULTI-WAY STRETCH)
COV-REPL4880	FULL ENCLOSURE COVER, ADAPT/ALLAY/ALIGN 48x80 (RECOVERY 5 FLUID-RESISTANCE, MULTI-WAY STRETCH)
COV-REPL5480	FULL ENCLOSURE COVER, ADAPT/ALLAY/ALIGN 54x80 (RECOVERY 5 FLUID-RESISTANCE, MULTI-WAY STRETCH)
COV-REPL6080	FULL ENCLOSURE COVER, ADAPT/ALLAY/ALIGN 60x80 (RECOVERY 5 FLUID-RESISTANCE, MULTI-WAY STRETCH)

Recovery 5 Ultra	
COV-REPL3680-R5U	FULL ENCLOSURE COVER, ADAPT/ALLAY/ALIGN 36x80 (RECOVERY 5 ULTRA SUPERIOR FLUID-RESISTANCE, MULTI-WAY STRETCH)
COV-REPL3684-R5U	FULL ENCLOSURE COVER, ADAPT/ALLAY/ALIGN 36x84 (RECOVERY 5 ULTRA SUPERIOR FLUID-RESISTANCE, MULTI-WAY STRETCH)
COV-REPL3980-R5U	FULL ENCLOSURE COVER, ADAPT/ALLAY/ALIGN 39x80 (RECOVERY 5 ULTRA SUPERIOR FLUID-RESISTANCE, MULTI-WAY STRETCH)
COV-REPL4280-R5U	FULL ENCLOSURE COVER, ADAPT/ALLAY/ALIGN 42x80 (RECOVERY 5 ULTRA SUPERIOR FLUID-RESISTANCE, MULTI-WAY STRETCH)
COV-REPL4284-R5U	FULL ENCLOSURE COVER, ADAPT/ALLAY/ALIGN 42x84 (RECOVERY 5 ULTRA SUPERIOR FLUID-RESISTANCE, MULTI-WAY STRETCH)
COV-REPL4880-R5U	FULL ENCLOSURE COVER, ADAPT/ALLAY/ALIGN 48x80 (RECOVERY 5 ULTRA SUPERIOR FLUID-RESISTANCE, MULTI-WAY STRETCH)
COV-REPL5480-R5U	FULL ENCLOSURE COVER, ADAPT/ALLAY/ALIGN 54x80 (RECOVERY 5 ULTRA SUPERIOR FLUID-RESISTANCE, MULTI-WAY STRETCH)
COV-REPL6080-R5U	FULL ENCLOSURE COVER, ADAPT/ALLAY/ALIGN 60x80 (RECOVERY 5 ULTRA SUPERIOR FLUID-RESISTANCE, MULTI-WAY STRETCH)

Replacement enclosure covers with handles, including the new high-strength Hercules base cover, for **Sömn, Koppla, Optima 2, and Symmetry** mattresses.

Part Number	Description
COV-REPL3680-STX	FULL ENCLOSURE COVER, SOMN/KOPPLA 36x80 (STARTEX, FLUID-RESISTANT, MULTI-WAY STRETCH)
COV-REPL3980-STX	FULL ENCLOSURE COVER, SOMN/KOPPLA 39x80 (STARTEX, FLUID-RESISTANT, MULTI-WAY STRETCH)
COV-REPL4280-STX	FULL ENCLOSURE COVER, SOMN/KOPPLA 42x80 (STARTEX, FLUID-RESISTANT, MULTI-WAY STRETCH)
COV-REPL4880-STX	FULL ENCLOSURE COVER, SOMN/KOPPLA 48x80 (STARTEX, FLUID-RESISTANT, MULTI-WAY STRETCH)
COV-REPL3680-OPT2	FULL ENCLOSURE COVER, OPTIMA 2 36x80 (NYLON, WATERPROOF)
COV-REPL3980-OPT2	FULL ENCLOSURE COVER, OPTIMA 2 39x80 (NYLON, WATERPROOF)
COV-REPL4280-OPT2	FULL ENCLOSURE COVER, OPTIMA 2 42x80 (NYLON, WATERPROOF)
COV-REPL4880-OPT2	FULL ENCLOSURE COVER, OPTIMA 2 48x80 (NYLON, WATERPROOF)
COV-REPL3680-SYM	FULL ENCLOSURE COVER, SYMMETRY 36x80 (FLUID-RESISTANT, MULTI-WAY STRETCH)
COV-REPL3980-SYM	FULL ENCLOSURE COVER, SYMMETRY 39x80 (FLUID-RESISTANT, MULTI-WAY STRETCH)
COV-REPL4280-SYM	FULL ENCLOSURE COVER, SYMMETRY 42x80 (FLUID-RESISTANT, MULTI-WAY STRETCH)
COV-REPL4880-SYM	FULL ENCLOSURE COVER, SYMMETRY 48x80 (FLUID-RESISTANT, MULTI-WAY STRETCH)